

Trouble shooting for blue ink missing

Step 1: Replace new blue ink cartridge to printer.

Step 2: Perform head cleaning via workstation 2 times.

Step 3: Perform nozzle check.

If above steps done, but the blue ink can not come out, we need to switch ink channel of blue ink and white ink.

Preparation work:

Power off printer and open maintenance cover.

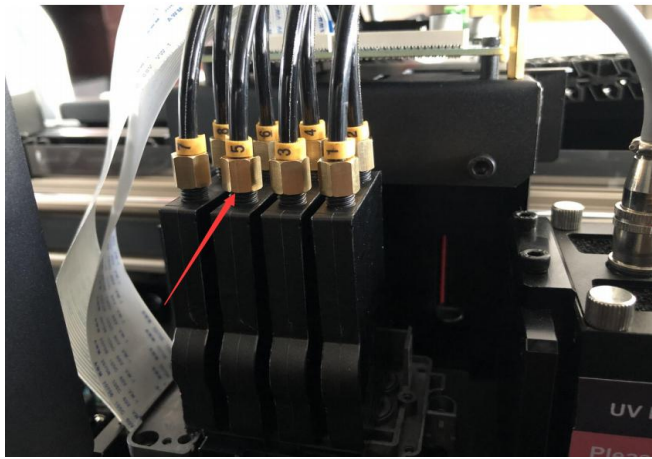
Move carriage to middle position.



Step 1: Switch ink channel of blue ink and white ink from damper.

Before switching:

No 5: blue ink No.6: white ink

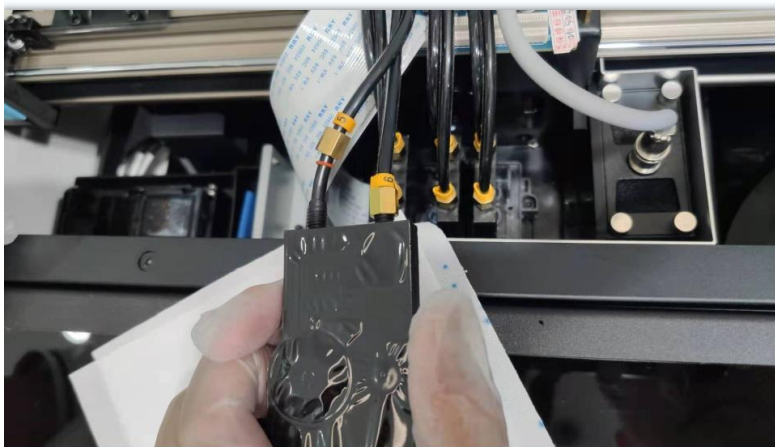


After switching:

1-1 Take out damper(No.5& No.6) from carriage.

1-2 Switch ink tubes of No.5 and No.6.

1-3 Place damper back to printer.



Step 2: Place blue ink cartridge to white ink cartridge position.

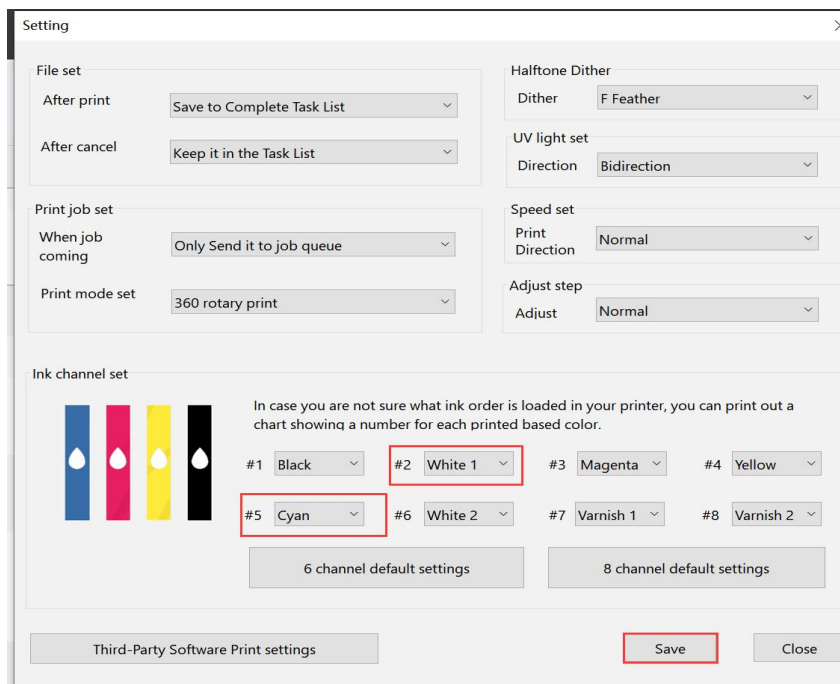


Step 3: Change ink channel set from workstation

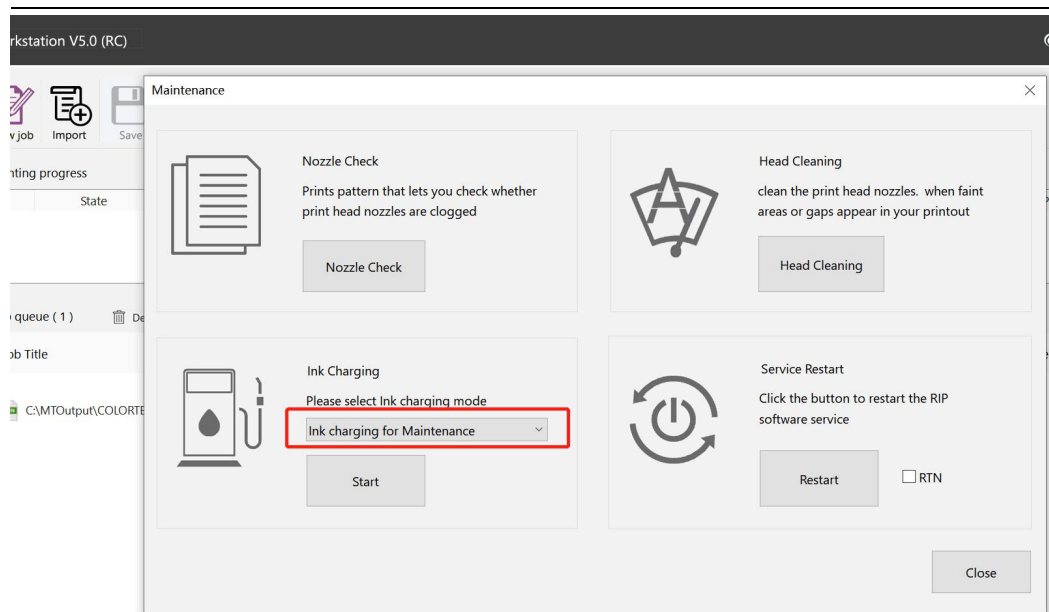
#2 White 1

#5 Cyan

Click 'save' to save ink channel set.



Step 4: Perform 'ink charging for maintenance'.



Step 5:perform head cleaning

Step 6:Perform nozzle check