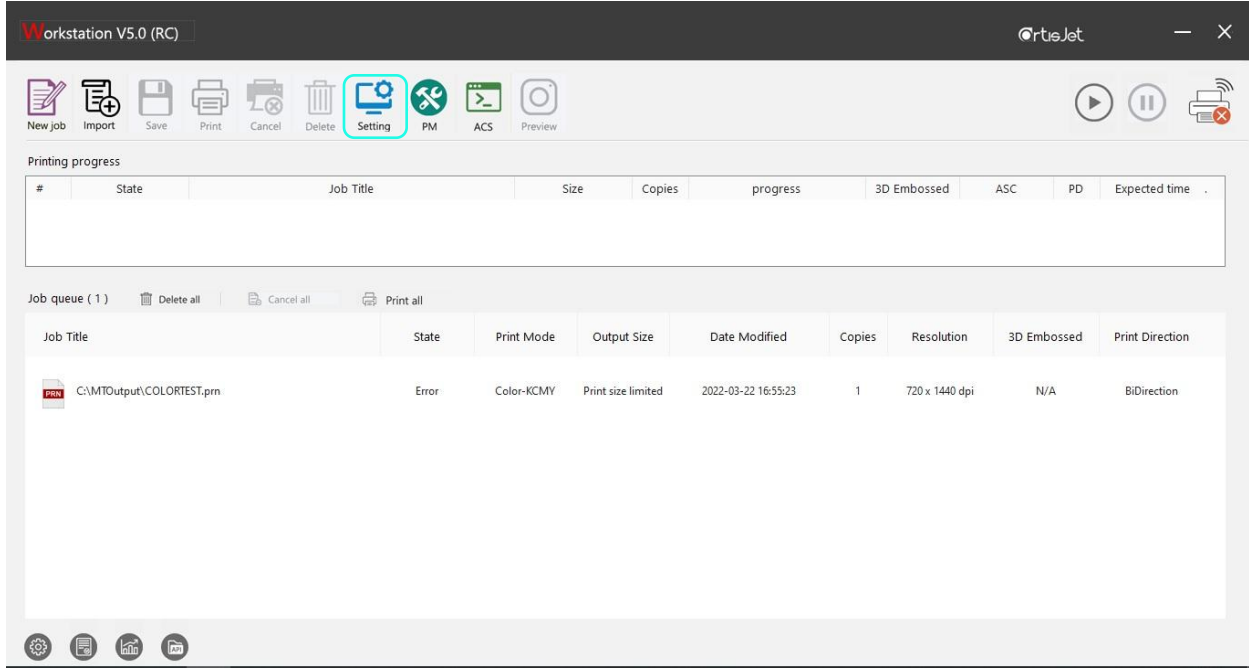
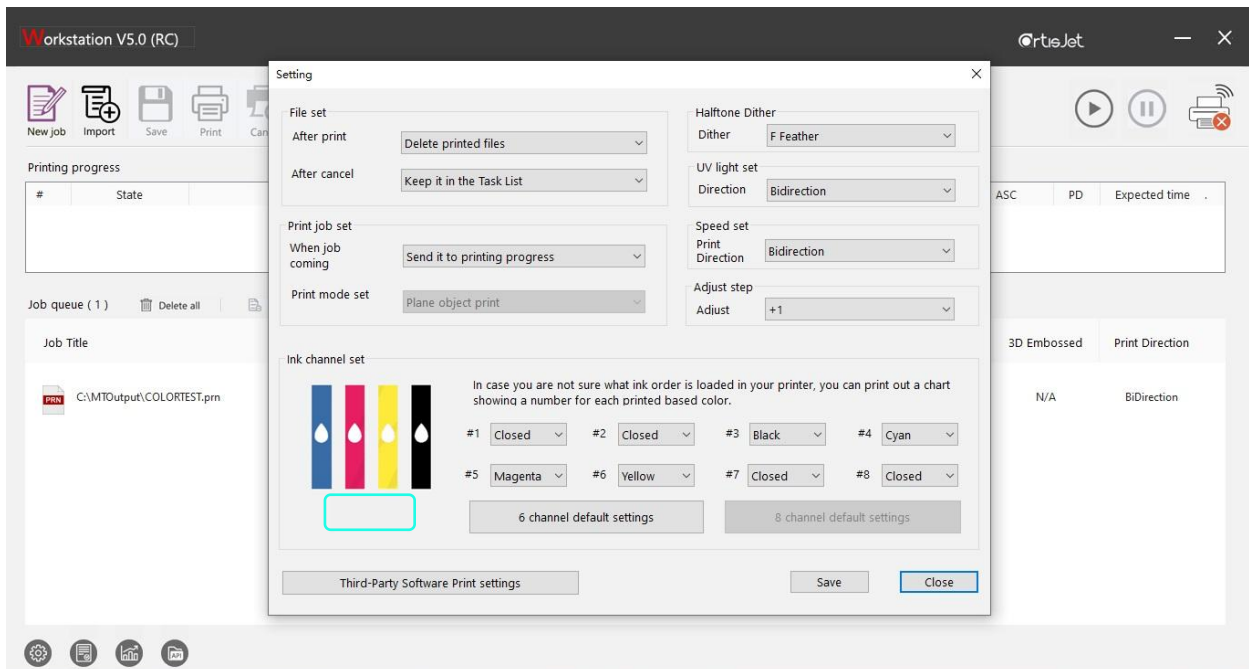


THE INITIAL POSITION SETTING

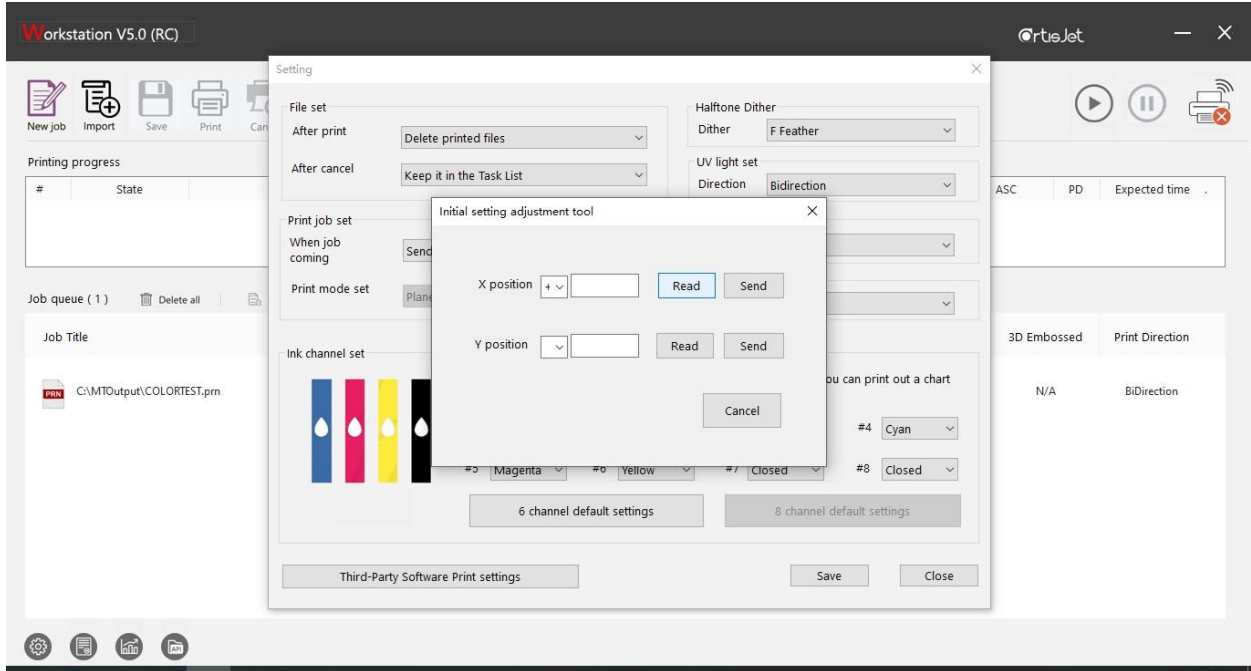
Suggested period: each 3 months or on demand



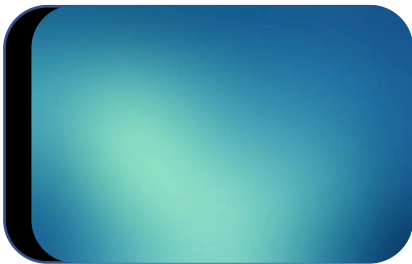
Step 1: Open artisJet Workstation, go to "Setting".



Step 2: Find the BLANK area under the ICON, right click this area.

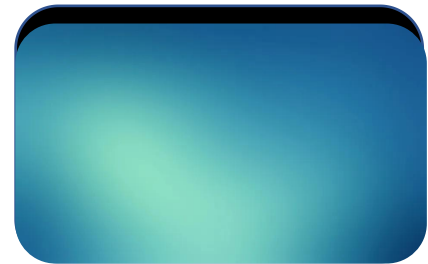


Step 3: Right click the button "Read" to get the existing working data as basic standard.



← Feeding Direction ①

① Increase the index on Y position to move the image forward



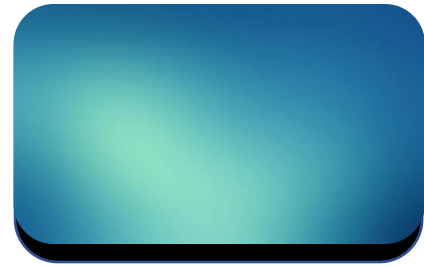
← Feeding Direction ③

③ Increase the index on X position to move the image up



← Feeding Direction ②

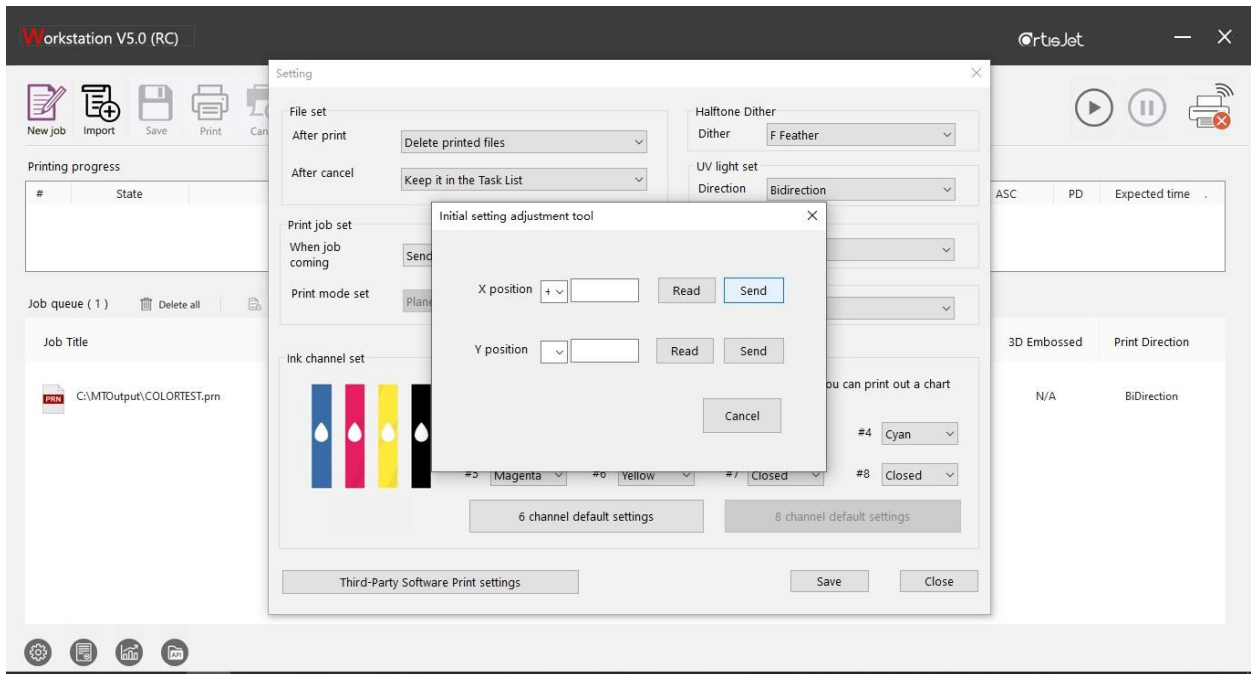
② Reduce the index on Y position to move the image back



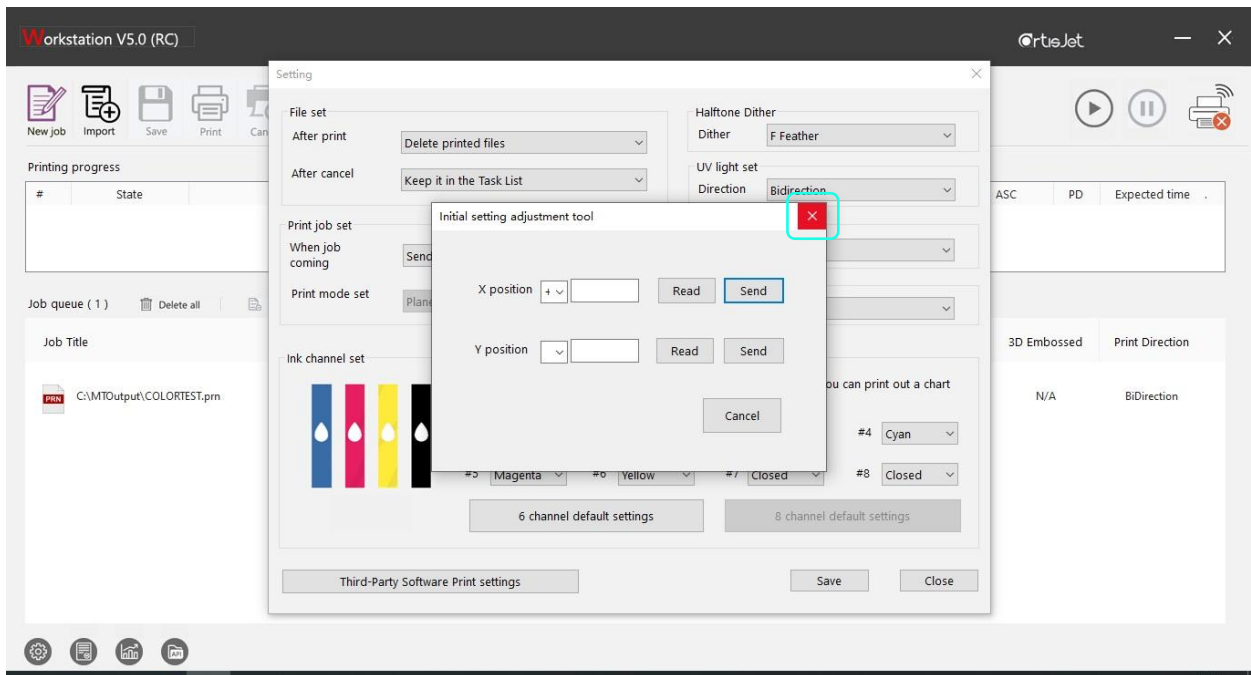
← Feeding Direction ④

④ Reduce the index on X position to move the image down

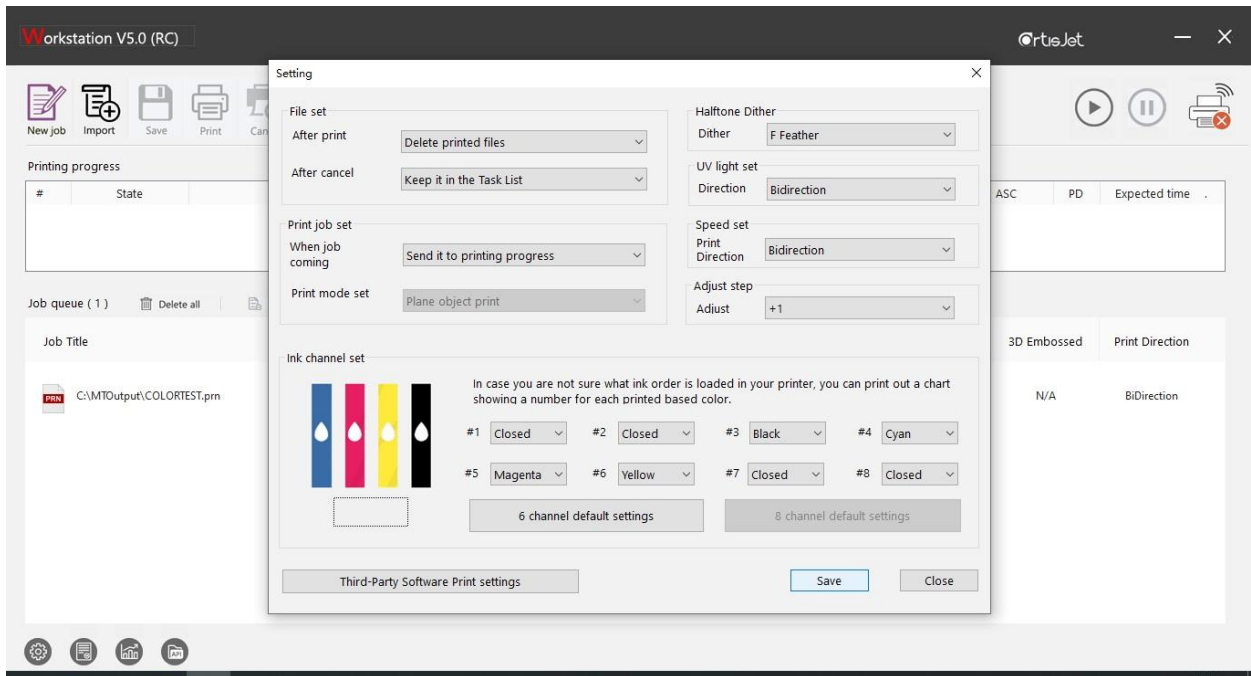
Step 4: Adjust the parameters accordingly



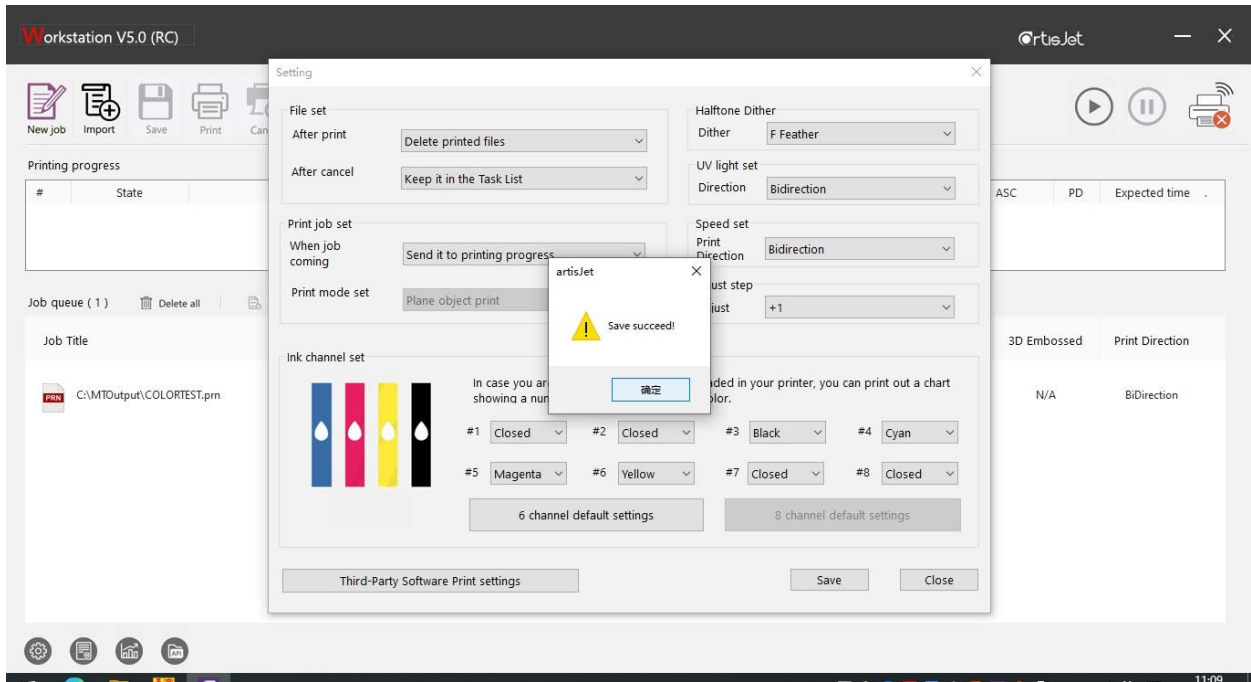
Step 5: After setting, click “Send” to send the setting result.



Step 6: Close the window by clicking the “Close” button.



Step 7: Clicking the "Save" button.



Step 8: Clicking the "OK" button and start printing test