

VERSION

2.0

artJet

an innovative brand in smart sizes uv printers

artis 5000U

B2 LED UV
PRINTER



artis 5000U

PRINTER INSTaLLaTION MaNUaL

ABOUT THIS FILE

Thank you for spending your valuable time on reading this manual.

This manual is vital to your experience And safety, as well as proper maneuvering of artisJet printers in production. The contents herein will guide you through the whole procedures of the initial setup of the printer.

It is for all the printer operators involved in the production process. This file must be handed over to any operator if there is any position replacement. Please follow all the steps instructed in this manual.

Contents

1. PRINTER OVERVIEW – Get to know the printer.....	4
2. THE CONTROL PANEL – Display, control buttons And functions.....	6
3. PRINTER ENVIRONMENT – Load the printer on proper environment.....	9
4. PRINTER INSPECTION – Execute the initial inspection after the shipment.....	10
5. PRINT SOFTWARE – Install the Design Software & Print Software.....	12
6. INK SYSTEM – Initialize the ink system.....	15
7. PRINTING QUALITY – Proceed the nozzle check.....	17
– Check the print quqlity.....	18
8. START PRINTING – Starting point printing.....	20
– Correctly load & print the templates.....	21
– Print result.....	23
– Automatic Height adjustment.....	24

1. Printer overview

GET TO KNOW THE PRINTER

A timely expect-able printer, the **Artis 5000U B2 LED UV printer** is suitable for small working environments as printing digital stores, making it a versatile desktop printer for print on demand workflows.

The printer's front and right side view (**Fig. 1**), displays: the control panel, with different functions; the working table (flatbed table with height adjustment); the ink cartridges, power button and UV cooling system.

The waste ink bottle and cylindrical transformation port are found on the printer's left side (**Fig. 2**). On the back side of the printer, there are the electrical power connection port and USB connection port.

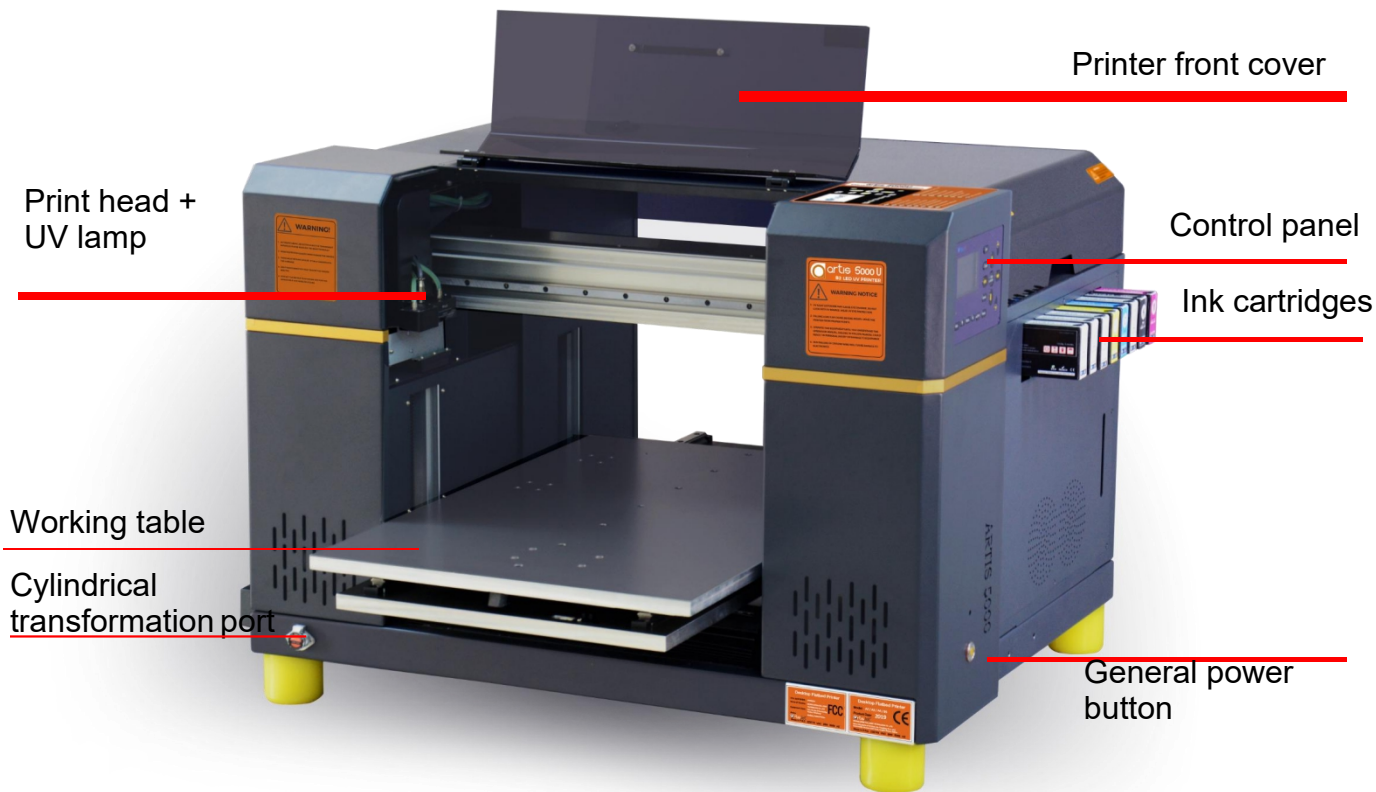
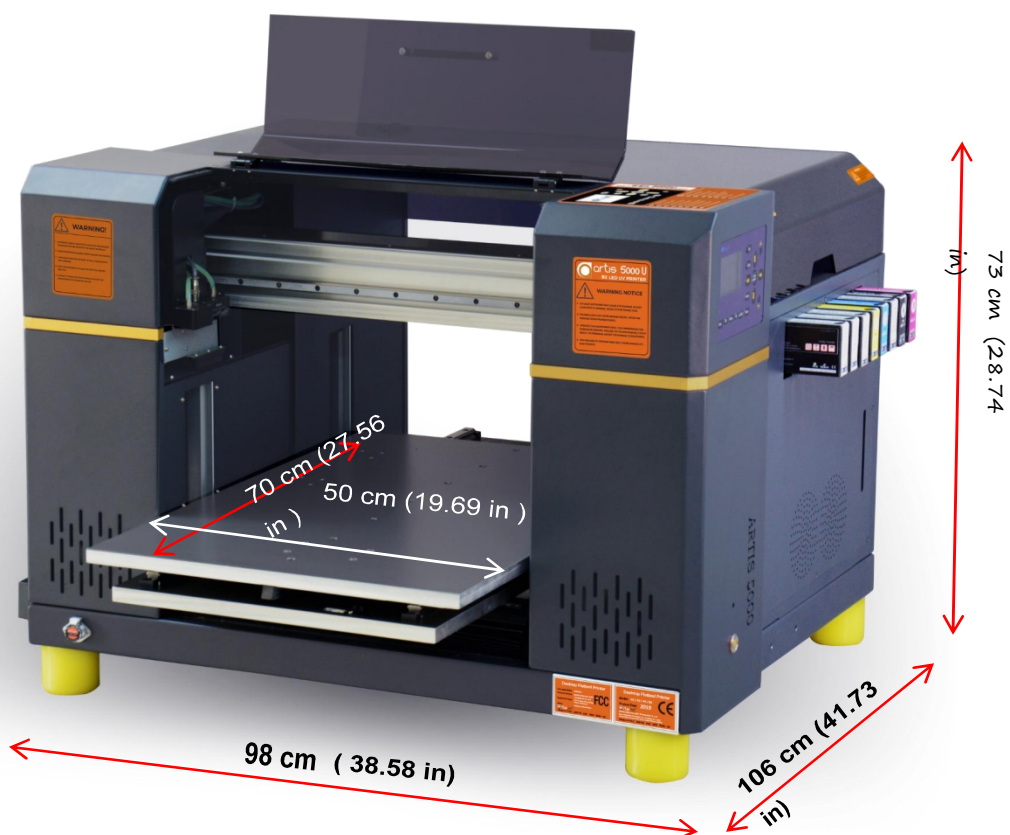


Fig.1 – Printer front and right side view





Fig.2 – Printer front and left side view



Printer Net Weight :190kg

Fig.3 – Printer sizes overview (depth x width x height) and printer net weight

2. The control panel

Display, control buttons & functions



Fig.4 – artis 5000U pro control panel and display














Buttons	Functions
	Pumping ink strongly
	Manual head cleaning
	auto height adjustment and back to print
	Cancel current printing task
	Pause current printing task
	Move up*
	Move down*
	Move out*
	Move back*
	Move back the working table without auto height sensor*
	Mini move down*

Fig. 5 – Control panel buttons and functions






Buttons	Functions
	Printer main setting menu
	Back to previous setting menu
	Confirm setting option
	Moving to up setting option
	Moving to down setting option
Functions on the Control Panel display / screen	
X-motor speed	adjust the speed of the carriage when printing. The default value is 8.
Print power	adjust the print power of the print head
X print zone	adjust this value when using bidirectional printing for better results.
Holiday mode	after the printer is turned on and in the holiday mode,it will Auto cleaning.
Information	printer version information
UV level	adjust the power of the normal UV lamp
Varnish level	adjust the power of the varnish UV lamp

Fig.5 – Control panel buttons and functions

3. Printer environment

Load the printer in proper environment

After the package was opened and the top of the box was removed, handle the printer careful to avoid any damage.

Grab the printer from all sides (**Fig.6**), lift it and hold it in straight position. Then place the printer on a flat and even table surface (**Fig.7**).



Fig.6 – Four people moving the printer carefully



Fig.7 – Position the printer onto the desk / table / flat surface



4. Printer inspection

Execute the initial inspection After the shipment

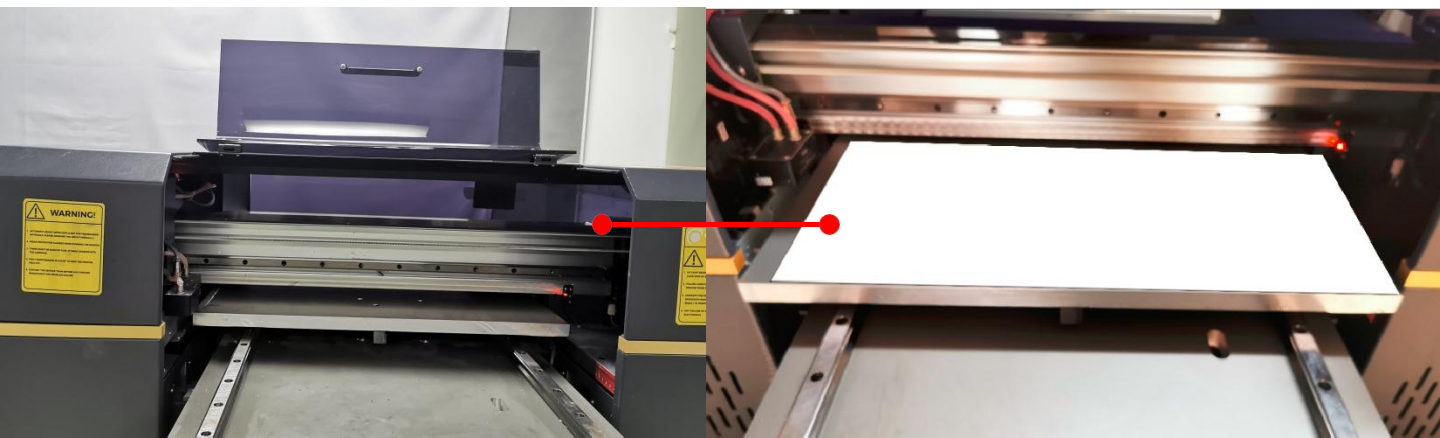


Fig.8 – Open the cover carefully and take out the E-fixture mat from the working table



Fig.9 – Unlock the carriage by removing the tapes





Fig.10 – Connect the power cable



Fig.11 – Press General power button

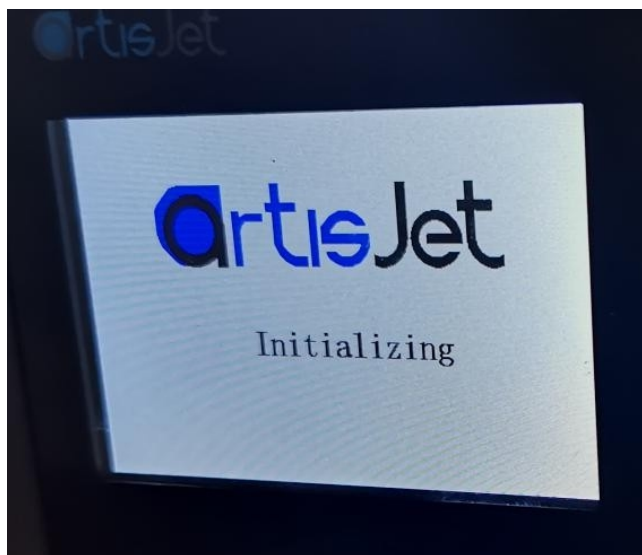


Fig.12 – After pressing the General Power button, the “Initializing” message will be displayed on the screen

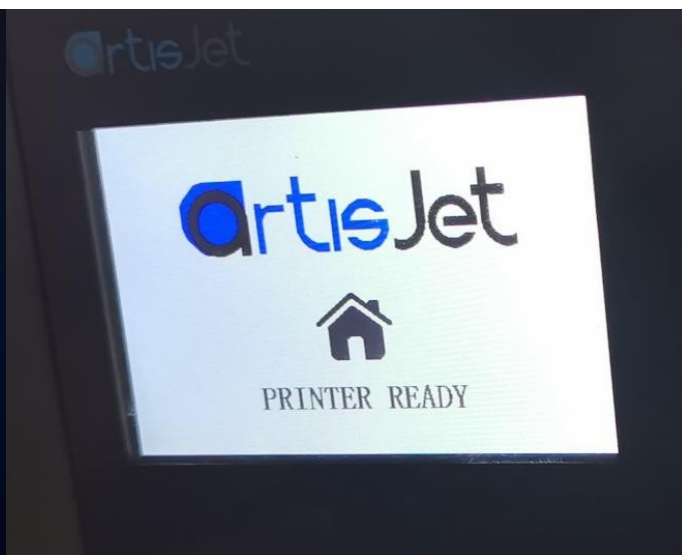


Fig.13 – Wait till the printer is ready (a message will be displayed on the screen)



5. Print software

Install the design software & print software

Insert the USB drive (golden) & the Design Software dongle (blue) (**Fig.14**).



Fig.14 – Insert the USB drive (golden) & the Design Software dongle (blue)



- 1.TO DO LIST-Before Action
- 2-Installation manual & videos
- 3-Workstation 4.0
- 4-PRN Files
- 5-Rotary print
- 6-Tools

Fig.15 – Open the workstation

Next step is to install the workstation.
In the folder'3-Workstaion 4.0' folder, double click artisJet workstation for 5000U Install V4.0 Beta.exe, the window will open. Follow steps to to install workstation.

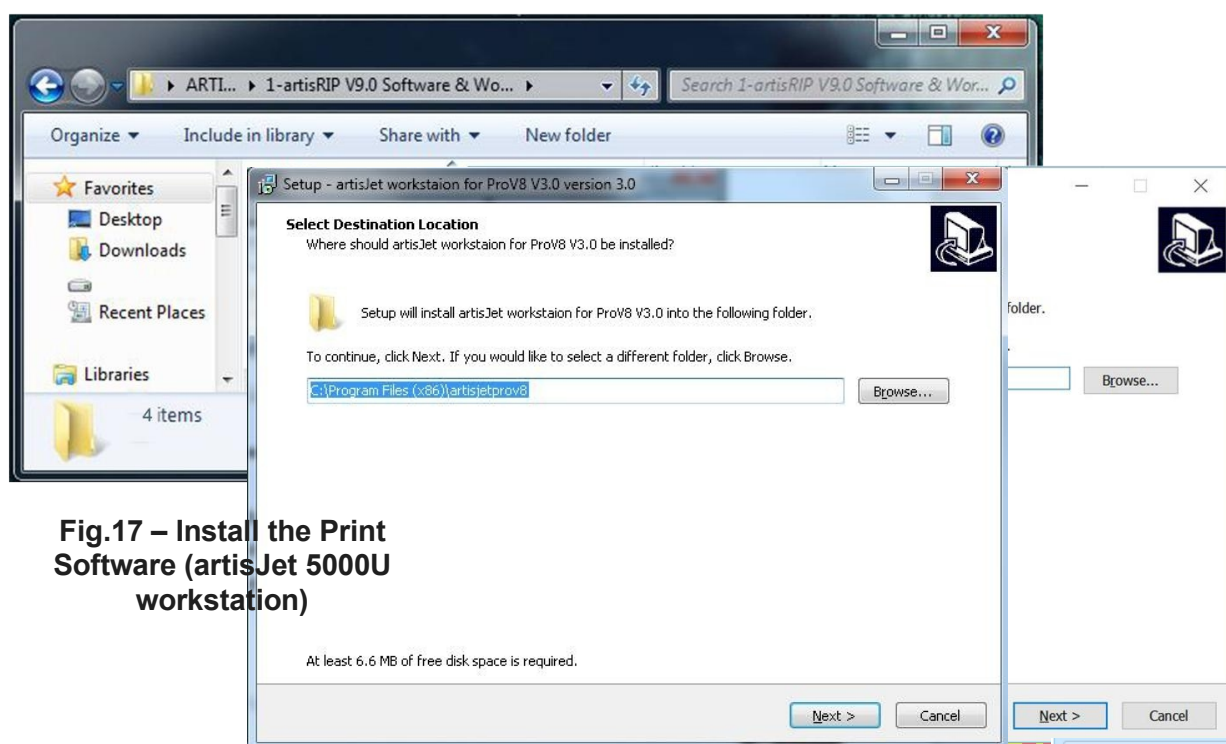
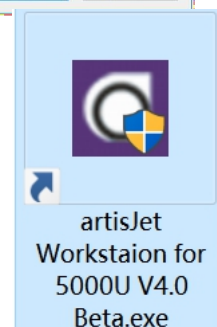


Fig.17 – Install the Print Software (artisJet 5000U workstation)

After installation process is finished, the software icon will appear to desktop.
Double click the “artisJet workstation for 5000UV4.0” icon to open the Print Software.



6. Ink system

Initialize the ink system

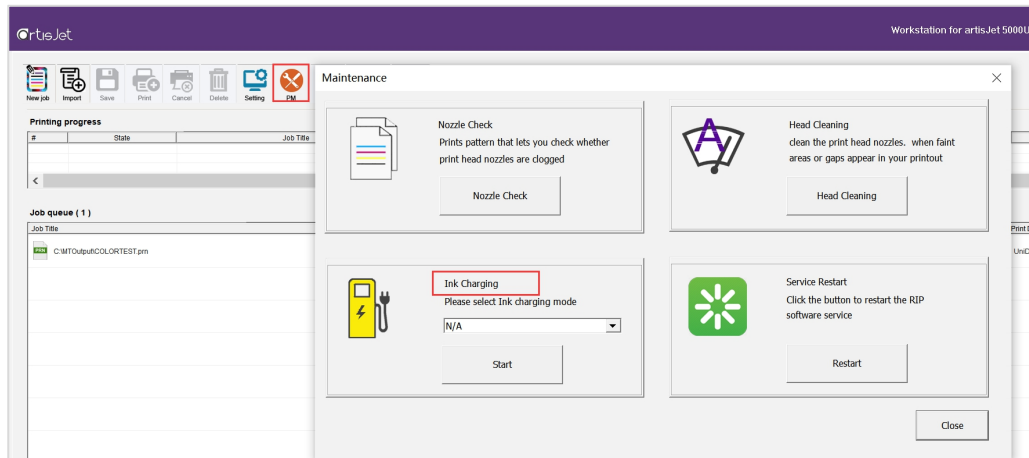
Note: Gently take out the cartridges from the packages to avoid any leaking or break.

Install the ink cartridges by inserting them to the ink tanks located on the right side of the printer.

Ink System Initial Set Up

A. Go to the workstation.

b. Click “PM” icon in the Workstation as Fig 18.



Click ‘Ink Charging’ to choose ‘ink charging for install the printer’

It will take around 8 minutes to finish the whole process. Fig 19

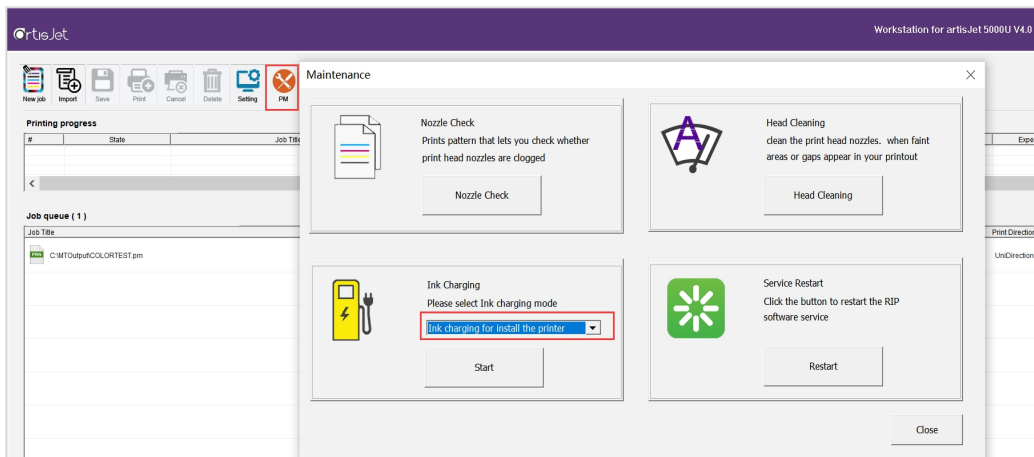
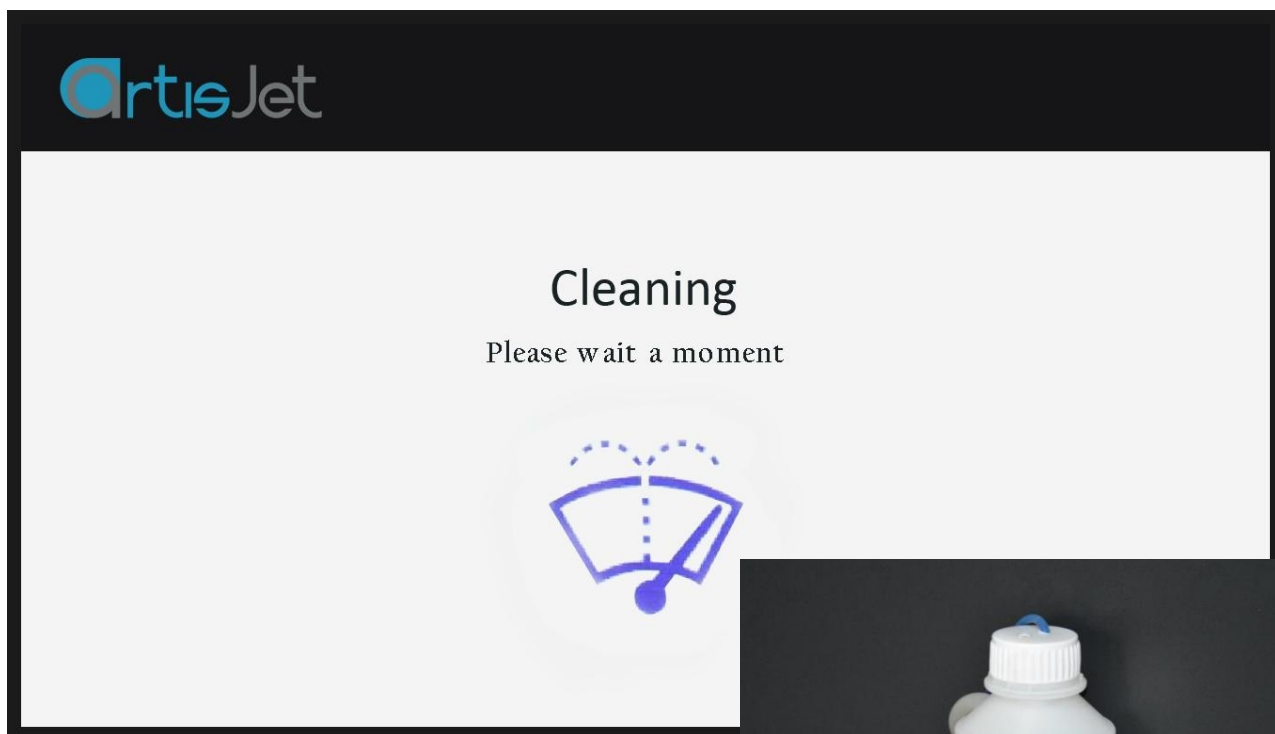


Fig.20 –the “Cleaning” message will be displayed on the printer screen



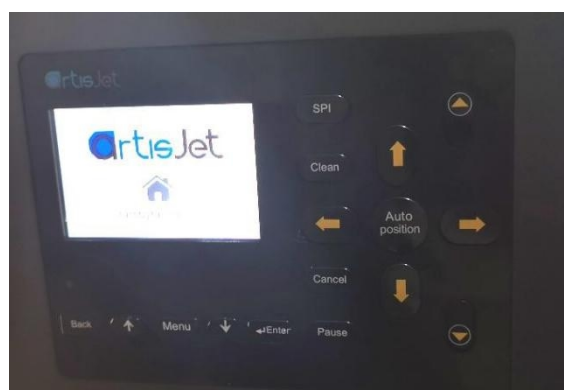
Please wait for about 8 **minutes**. After ink charging process done, you can see waste ink come into the waste ink bottle.

Fig 21



Click 'Clean' button on control panel, it will show 'cleaning' during auto head cleaning process. Please wait 2 minutes, the control panel will show printer ready once cleaning process done.

Fig 22



7. Printing quality test

Proceed the nozzle check

Note: this operation is important to ensure the printing quality for further production.



Fig.23 – Connect the USB cable



Fig.24 – Take one piece of E-fixture mat and peel off the film one side only



Fig.25 – Put the E-fixture mat onto the table and spread it till even on the surface

After the E-fixture is all fixed on the printer's table (printing area), press the **Auto position** button from control panel.



The working table will move forward first, then will move up to the highest position(**automatic height adjustment**) and finally back to the original position.



Fig.26 – automatic height adjustment with height sensor

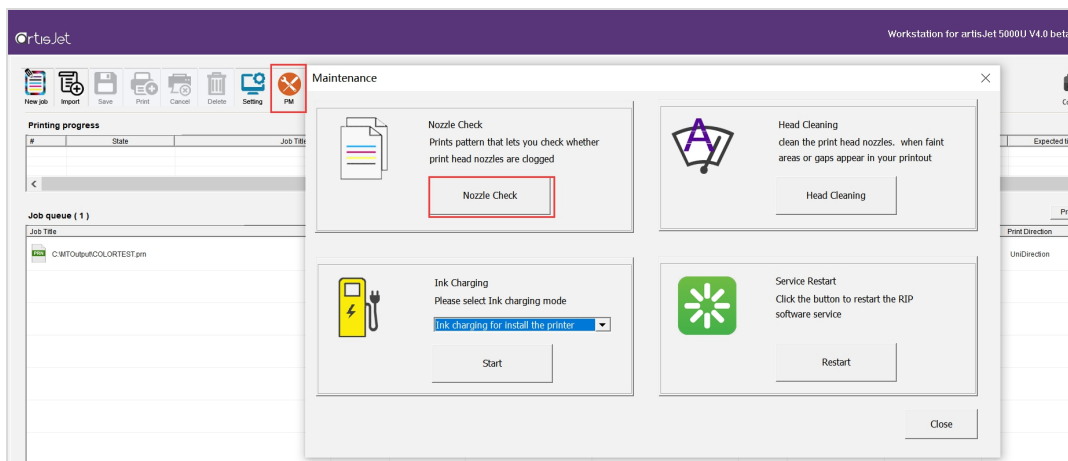


Fig.27 – On the Print Software, click on the “PM” icon, the “Maintenance” window will open.

**Click on the “Nozzle Check” button.
Wait till the screen states “Print Complete”**

Check the print quality

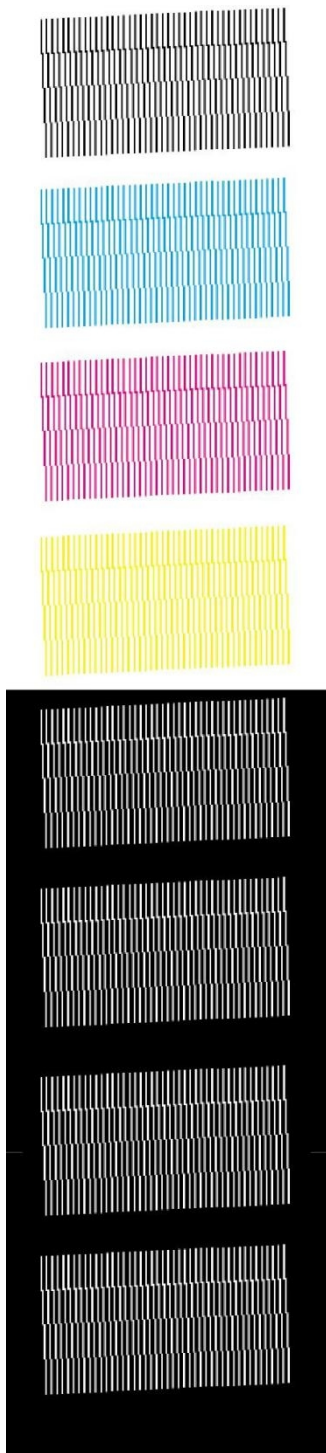


Fig.29 – Good quality. Continue.

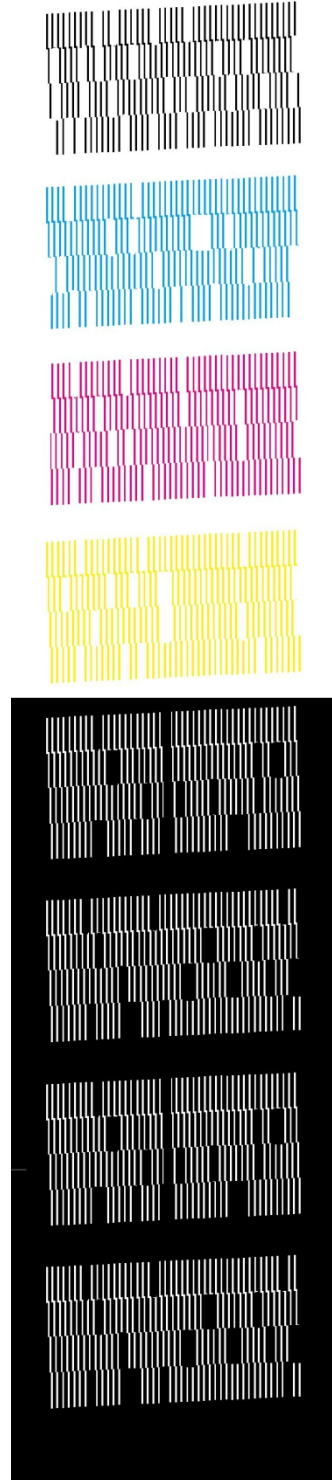


Fig.30 – Bad quality. Repeat the SPI + CLEaN process

Fig.28 If the print quality is not good(Not all the lines are full), click “Clean” button on the control panel till the nozzle check is full in all colors.



8. start pointing

Starting point printing

The first step is to print “ XY Starting Point - artis 5 0 0 0 U (Unit CM) ” (Fig 31) onto the table.


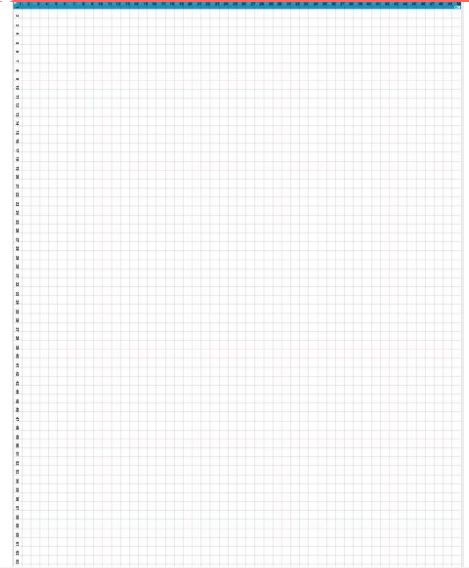
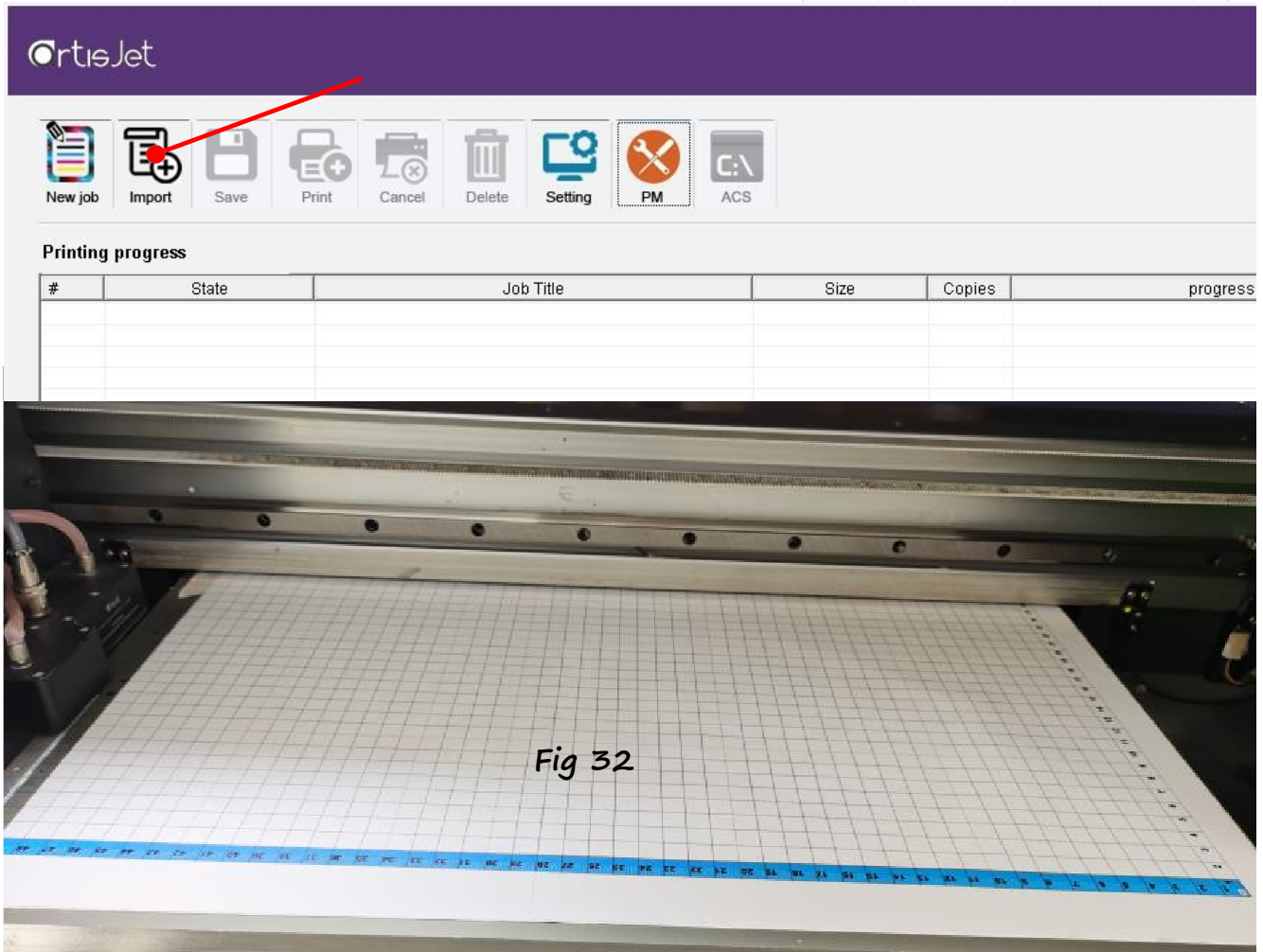
From  Print Software, click on the icon to open the “XY Starting Point -artis 5000U .prn”

Fig 31




Prn file and print result (**Fig 32**) .



8. Start printing

Correctly load & print the templates

The first step is to print “**Color Test Image**” onto the table (Fig. 33).

From the Print Software, click on the  icon (Fig.34)

to open the “**Color Test Image**” file(Fig.35) and print it (Fig.36).

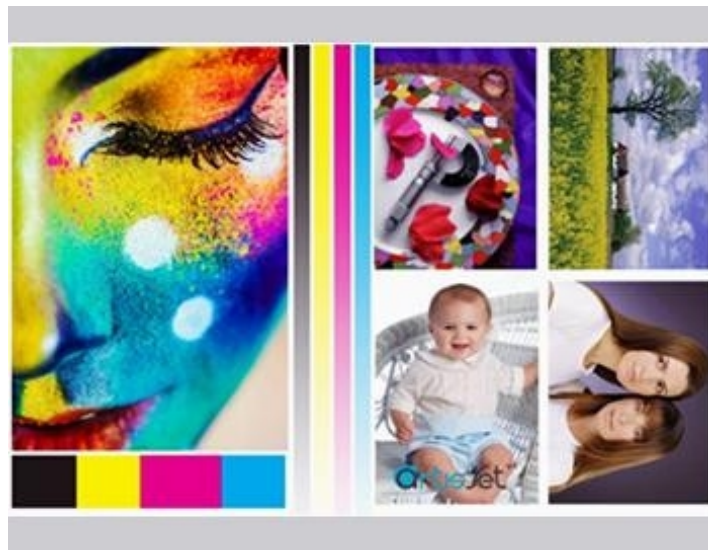


Fig.33 - Color test image

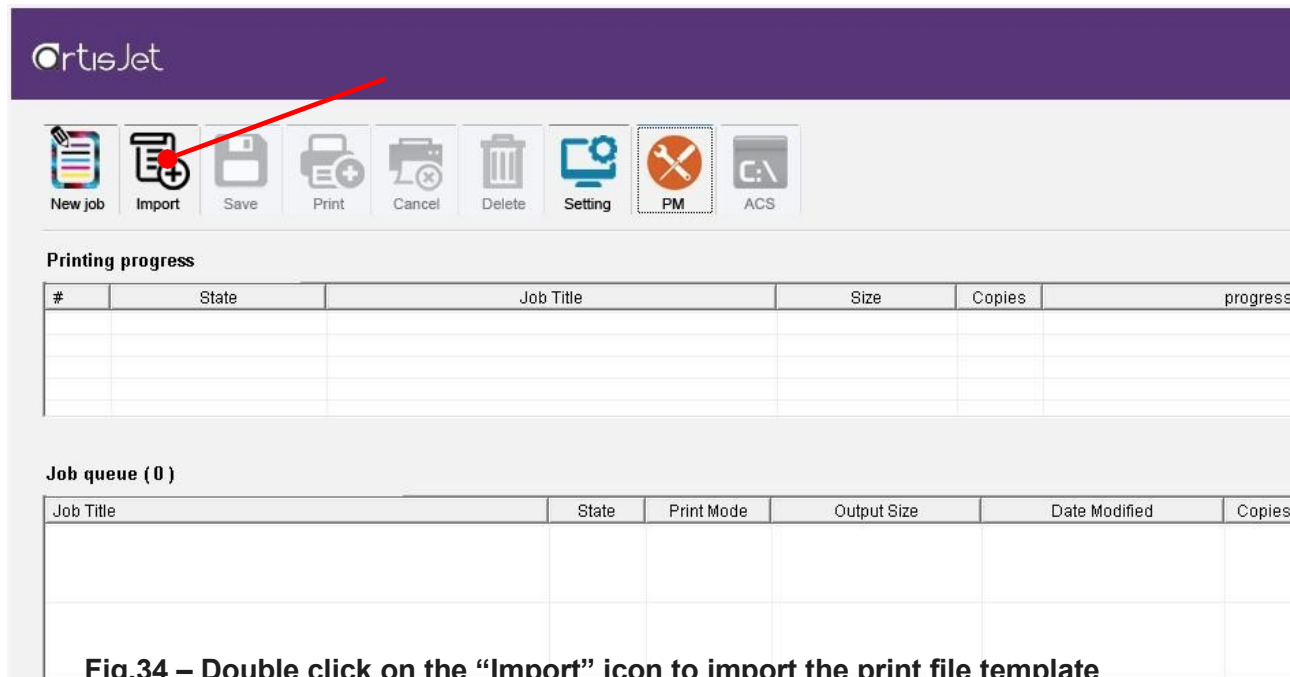


Fig.34 – Double click on the “Import” icon to import the print file template

Following the previous command, an “Import File” window will open.
Locate the “Color test image.prn” file from the USB drive, and click the “Open” button.

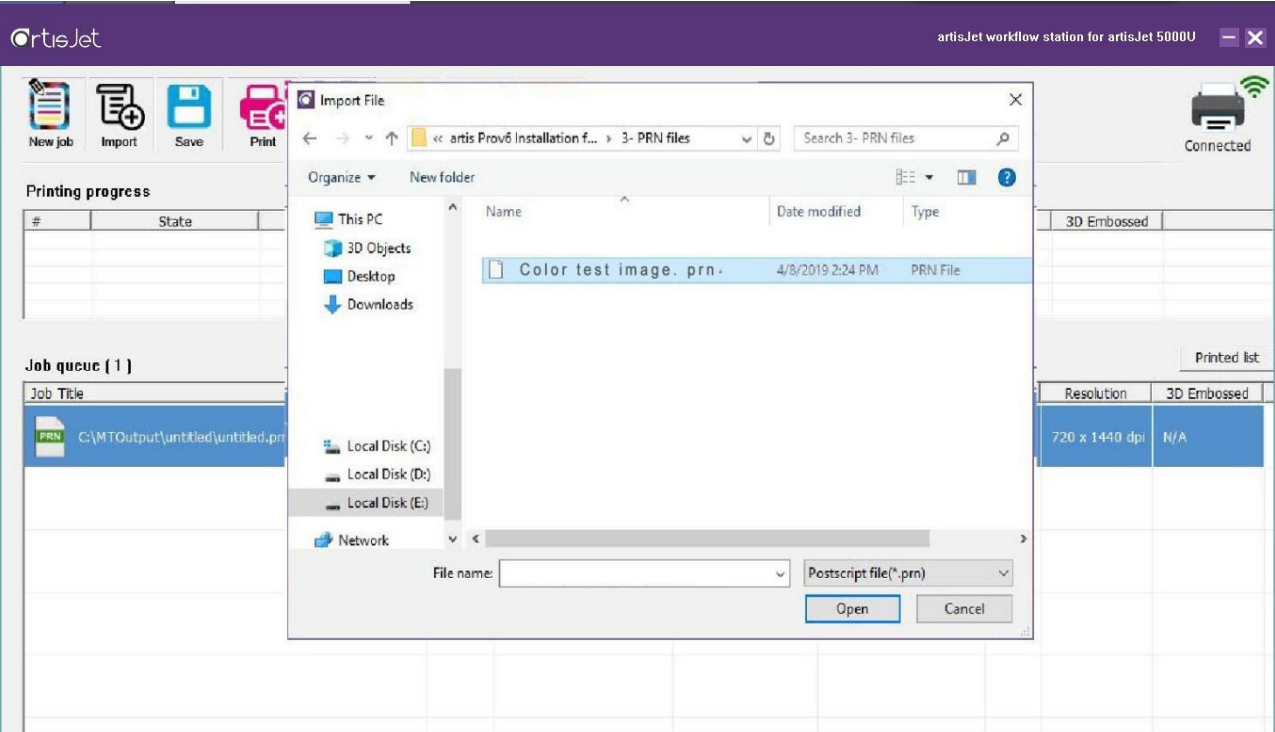


Fig.35 – Open the “Color test image.prn” print template file

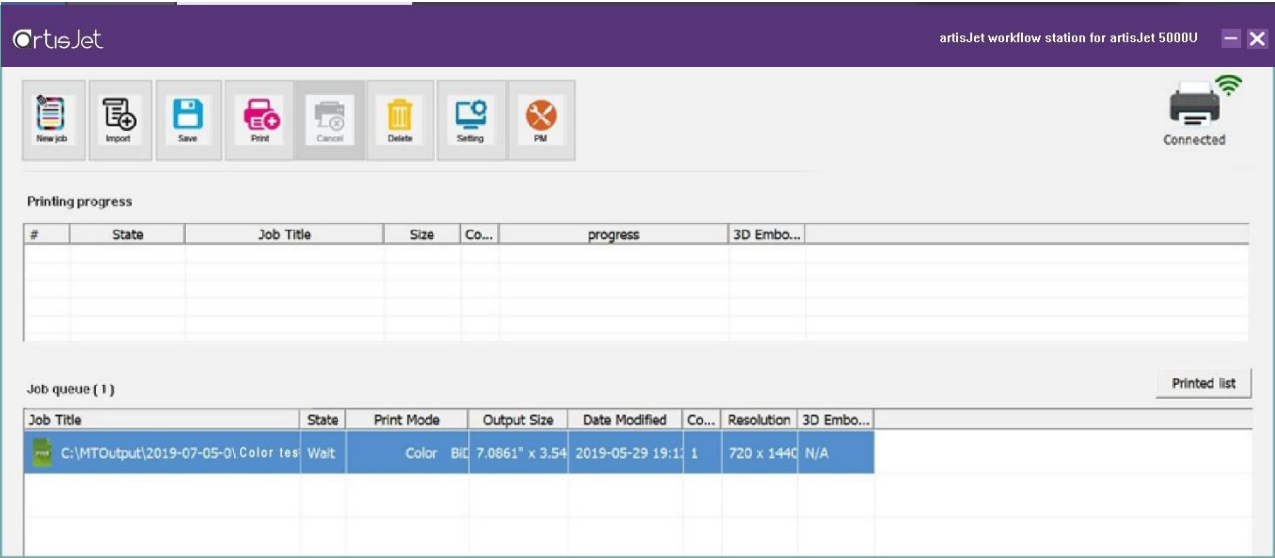


Fig.36 – Go to the Print Software and click on the “Print” icon

Print result

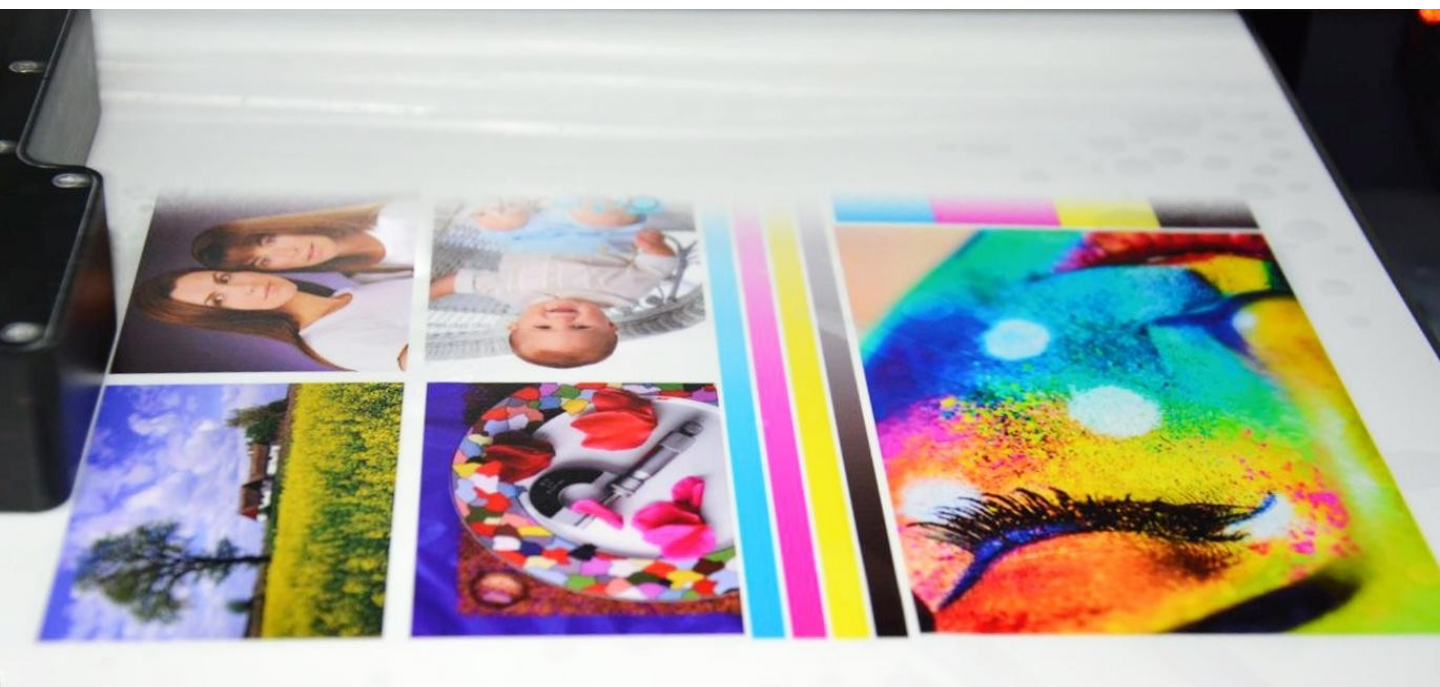


Fig.37 – “Color test image”printing



Fig.38 – Print result



automatic height adjustment

For each product, there might be different printing height.

Artis 5000U provides automatic height adjustment for different products. Click the “auto Position” button on the control panel, then the working table will return to its back position and will adjust the height.

Please notice the height sensors can not work for transparent materials.



Fig.39 – Place product on the working table; it must be in front of the height sensors

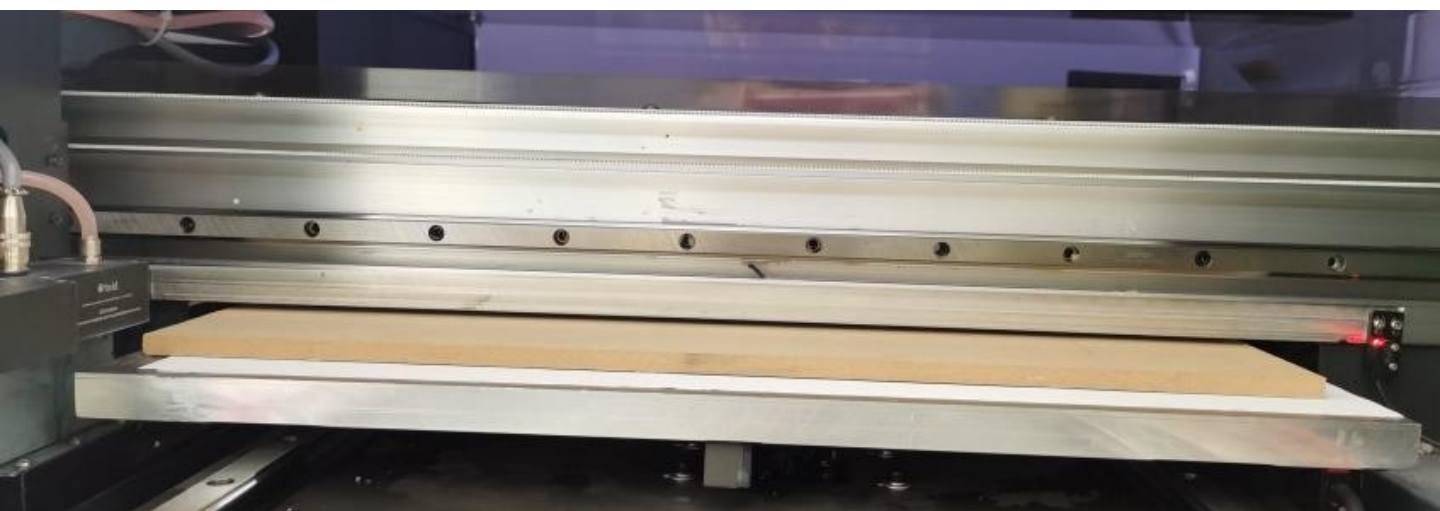


Fig.40 – auto-detecting the sample and auto adjusting the printing height

Start the product printing

For each product, there can be different printing menus. artisJet provides custom menus & templates for different products. Product printing menus are available on demand.



CONTaCT US FOR MORE

www.artisjet.com

|

ccc@artisjet.com

|

+86 186 1133 3892