

VERSION

2.0

**ArtisJet**

an innovative brand in smart sizes uv printers

# 3000U pro

B3 LED UV PRINTER



## artis 3000U pro

PRINTER INSTALLATION MANUAL

# ABOUT THIS FILE

Thank you for spending your valuable time on reading this manual.

This manual is vital to your experience and safety, as well as proper maneuvering of artisJet printers in production. The contents herein will guide you through the whole procedures of the initial setup of the printer.

It is for all the printer operators involved in the production process. This file must be handed over to any operator if there is any position replacement. Please follow all the steps instructed in this manual.

## Contents



1. PRINTER OVERVIEW – Get to know the printer.....	4
2. THE CONTROL PANEL – Display, control buttons and functions.....	6
3. PRINTER ENVIRONMENT – Load the printer on proper environment.....	9
4. PRINTER INSPECTION – Execute the initial inspection after the shipment.....	10
5. PRINT SOFTWARE – Install the Design Software & Print Software.....	12
6. INK SYSTEM – Initialize the ink system.....	15
7. PRINTING QUALITY – Proceed the nozzle check.....	17
– Check the print quality.....	18
8. START PRINTING – Starting print printing .....	20
– Correctly load & print the templates.....	21
– Print result .....	23
– Automatic Height Adjustment.....	24
– Start the product printing.....	24

# 1. Printer overview

## GET TO KNOW THE PRINTER

A timely expectable printer, the **NEW artis 3000U pro B3 LED UV printer** is suitable for small working environments as printing digital stores, making it a versatile desktop printer for print on demand workflows.

The printer's front and right side view (**Fig. 1**), displays: the control panel, with different functions; the working table (flatbed table with height adjustment); the ink cartridges, Power button, and UV Cooling system.

The waste ink bottle and cylindrical transformation port are found on the printer's left side (**Fig. 2**). On the back side of the printer, there are the electrical power connection port, and USB connection port.



Fig.1 – Printer front and right side view





Fig.2 – Printer front and left side view



Printer Net Weight : 120kg

Fig.3 – Printer sizes overview (depth x width x height; table size) and printer net weight

## 2. The control panel

Display, control buttons & functions

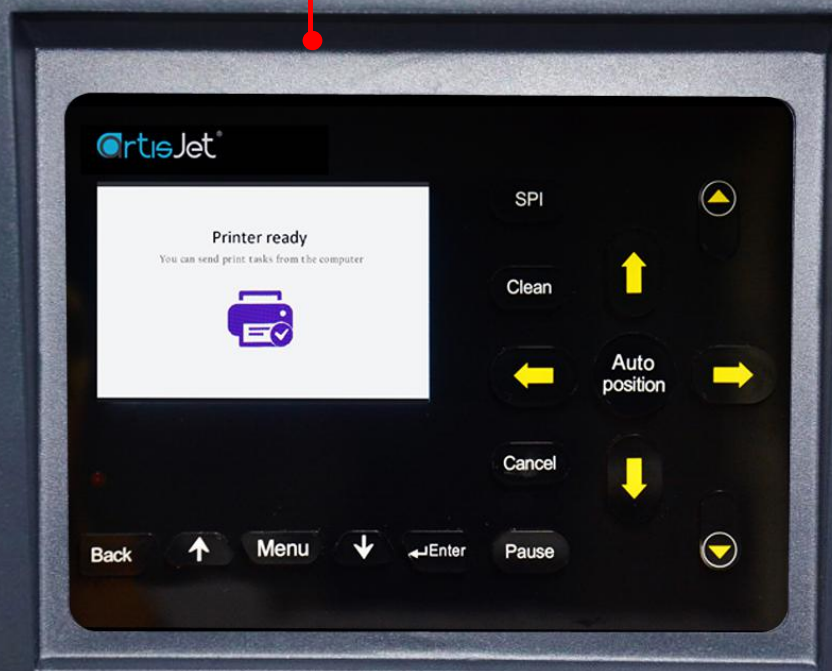


Fig.4 – artis 3000U pro control panel and display












Buttons	Functions
	Pumping ink strongly
	Manual head cleaning
	Auto height adjustment and back to print
	Cancel current printing task
	Pause current printing task
	Move up*
	Move down*
	Move out*
	Move back*
	Move back the working table without auto height sensor*
	Mini move down*

Fig. 5 – Control panel buttons and functions






Buttons	Functions
	Printer main setting menu
	Back to previous setting menu
	Confirm setting option
	Moving to up setting option
	Moving to down setting option
Functions on the Control Panel display / screen	
X-motor speed	Adjust the speed of the carriage when printing. The default value is 8.
Print power	Adjust the print power of the printhead
X print zone	Adjust this value when using bidirectional printing for better results.
Holiday mode	After the printer is turned on and in the holiday mode,it will auto cleaning.
Information	Printer version information
UV level	Adjust the power of the normal UV lamp
Varnish level	Adjust the power of the varnish UV lamp

Fig.5 – Control panel buttons and functions



### 3. Printer environment

#### Load the printer in proper environment

After the package was opened and the top of the box was removed, handle the printer with care to avoid any damage.

Grab the printer from all sides (Fig.6), lift it and hold it in straight position.

Then place the printer on a flat and even table surface (Fig.7).



Fig.6 – Four people moving the printer carefully



Fig.7 – Position the printer onto the desk / table / flat surface

## 4. Printer inspection

Execute the initial inspection after the shipment

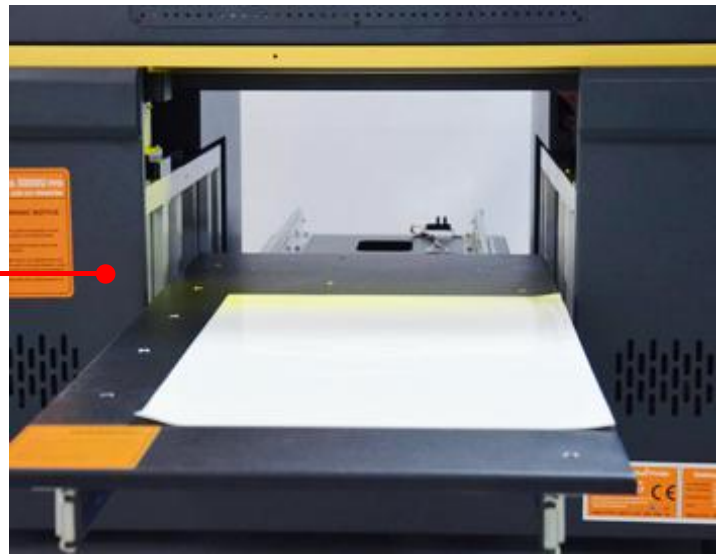


Fig.8 – Open the cover carefully and take out the E-fixture matt from the working table

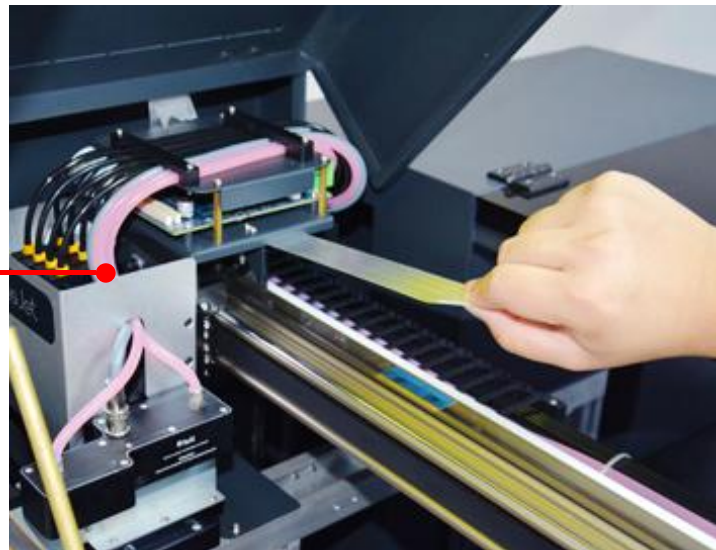
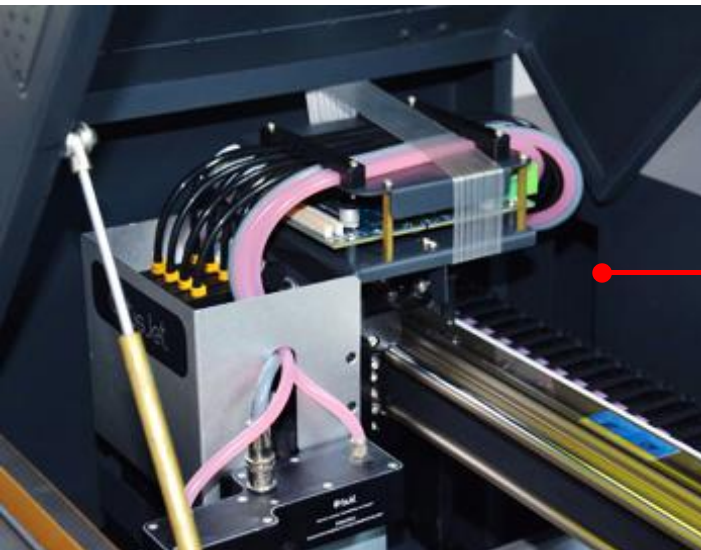


Fig.9 – Unlock the carriage by removing the tapes



Fig.10 – Connect the power cable



Fig.11 – Turn on the printer - 1. Unlock the emergency switch; 2. Press General power button

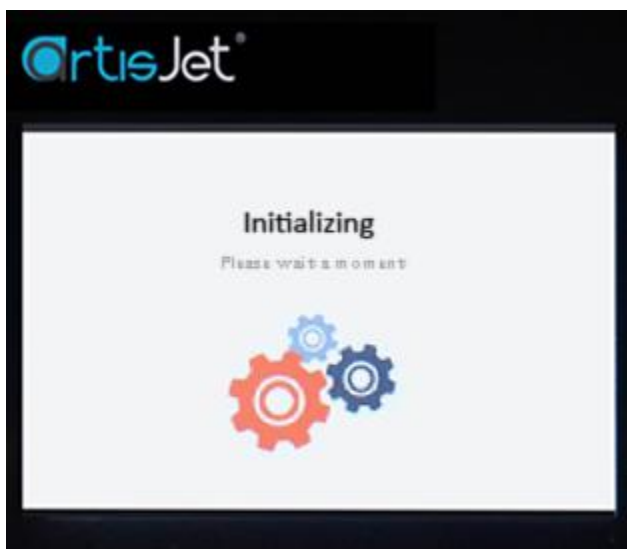


Fig.12 – After pressing the General Power button, the “Initializing” message will be displayed on the screen

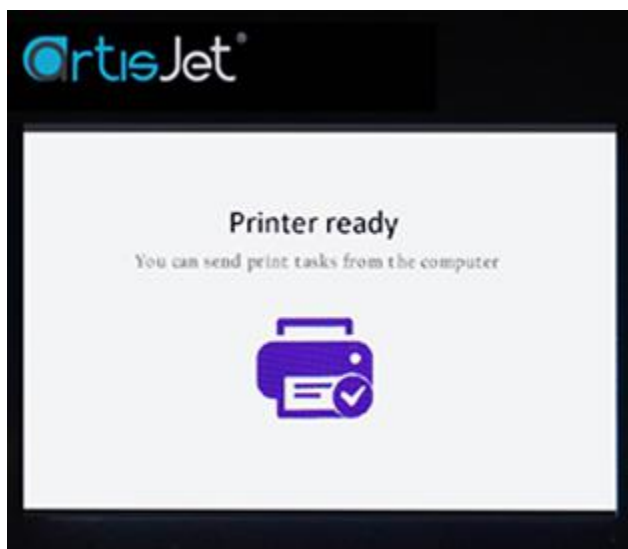


Fig.13 – Wait till the printer is ready (a message will be displayed on the screen)



## 5. Print software

### Install the design software & print software

Insert the USB drive (artis 3000U pro) & the Design Software dongle (artisRIP V9.0) (Fig.14).

If the USB window will not automatically open, locate the USB disk on your computer, and open it.

From the folder list (Fig.15), open the “*1-artisRIP V9.0 Software & Workstation*” folder, from where you choose the “*artisJet RIP V9.0 installation*” folder and copy the contents (artisRIP V9.0) and paste it to the C disk.



Fig.14 – Insert the USB drive (artis 3000U pro) & the Design Software dongle (artisRIP V9.0)

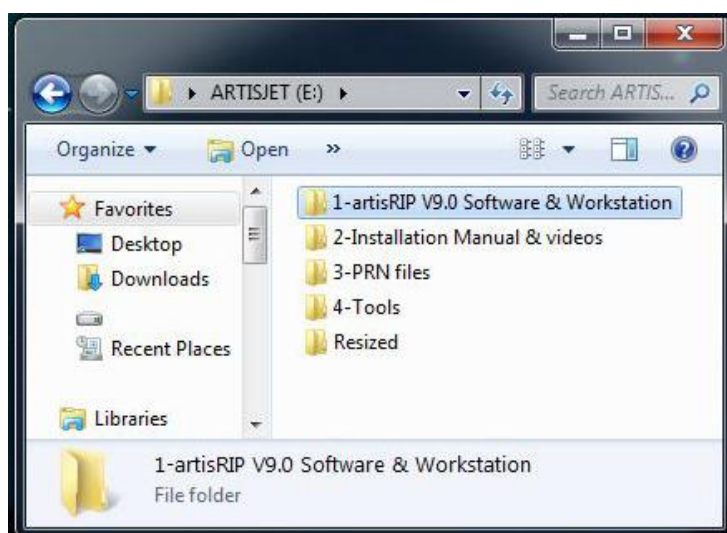


Fig.15 – Open the USB drive (folders list)

Next step is to install the USB driver.

In the “*1-artisRIP V9.0 Software & Workstation*” folder, double click on the “*artisJet USB driver install.exe*” file. The “*Windows Driver Installer for USB-Serial Devices*” window will open. Follow the steps as instructed by the driver installer.

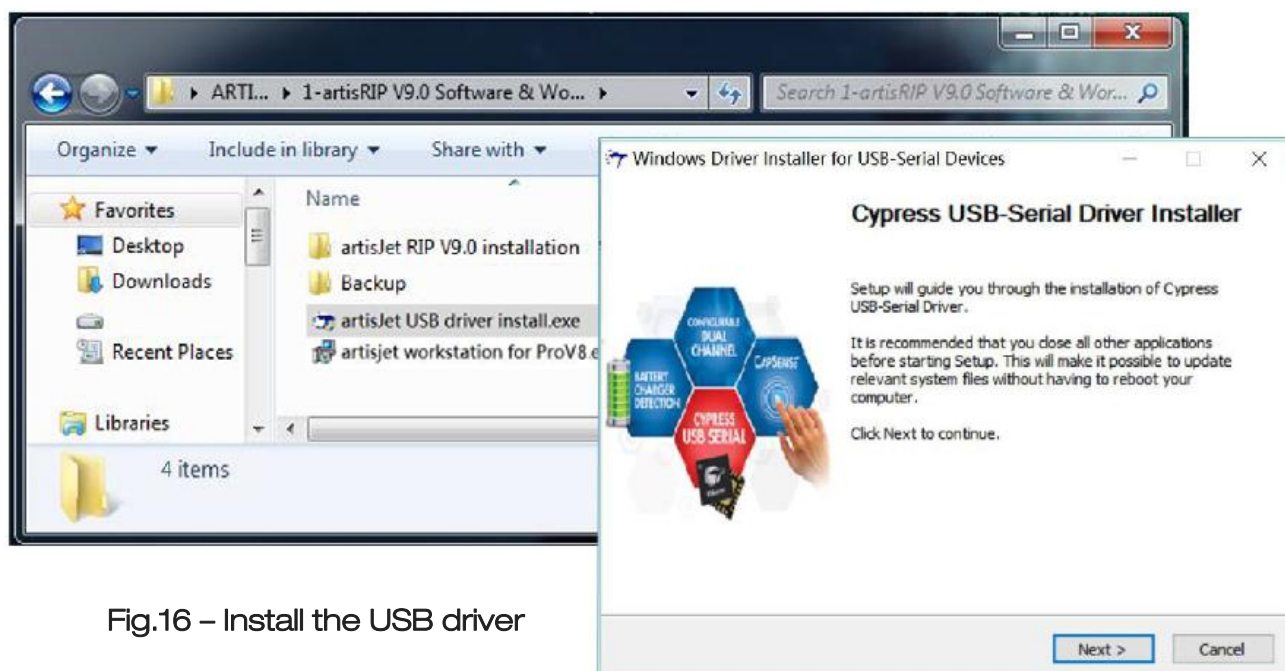


Fig.16 – Install the USB driver



Install the Print Software (artisJet proV6 Work Station).

In the “1-artisRIP V9.0 Software & Workstation” folder, double click on the “*artisJet workstaion for 3000U Pro Install V3.2.exe*” file. The “*Setup – artisJet workstaion for 3000U Pro V3.2*” window will open. Follow the steps as instructed by the driver installer.

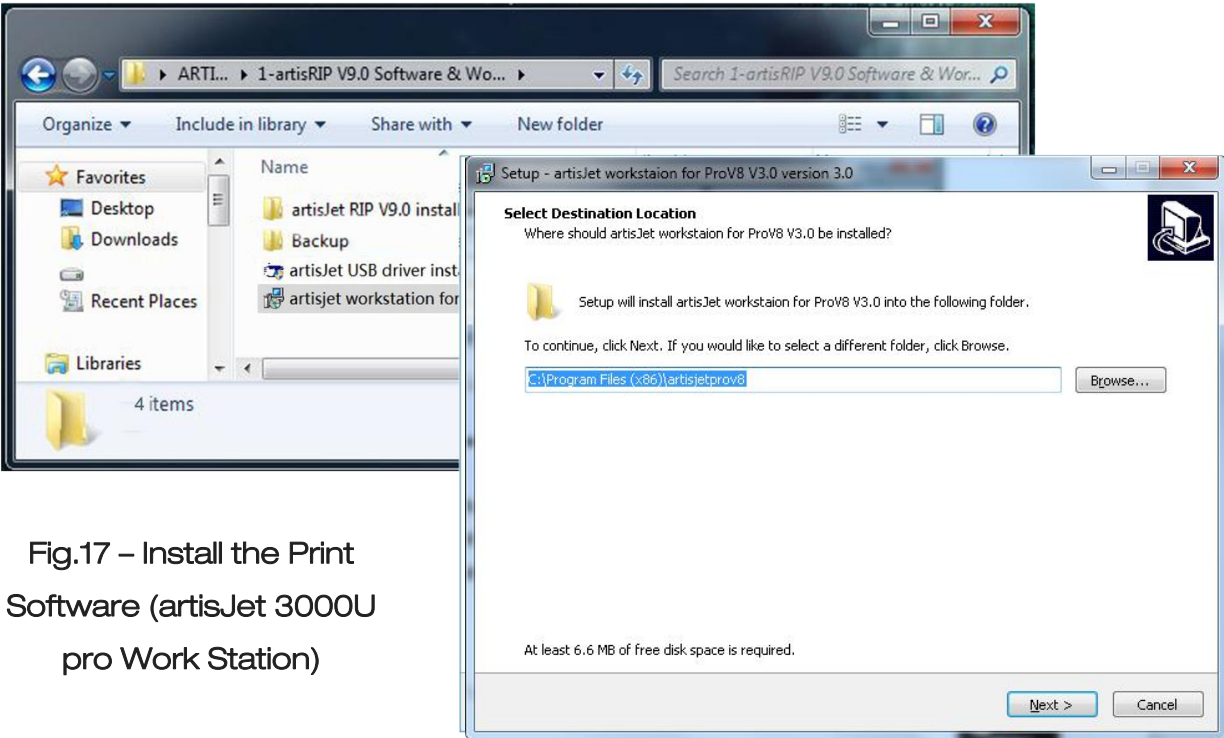


Fig.17 – Install the Print Software (artisJet 3000U pro Work Station)

After installation process is complete, the software icon will appear.

Double click the “*artisJet workstaion for 3000U Pro V3.2*” icon to open the Print Software.



# 6. Ink system

## Initialize the ink system

**Note:** Gently take out the cartridges from the packages to avoid any leaking or break. If the cartridges are empty, please fill them all.

Install the ink cartridges by inserting them to the ink tanks located on the right side of the printer.



### INK SYSTEM INITIAL SET UP

- Go to the work station installed in the computer.
- Click **“PM”** icon in the Work Station as Fig 18.

CLICK **“Puming Ink”** and select **“New Machine Install”**  
Click **“YES”** to proceed.  
And it will take 7 minutes for the whole process.

Fig 18

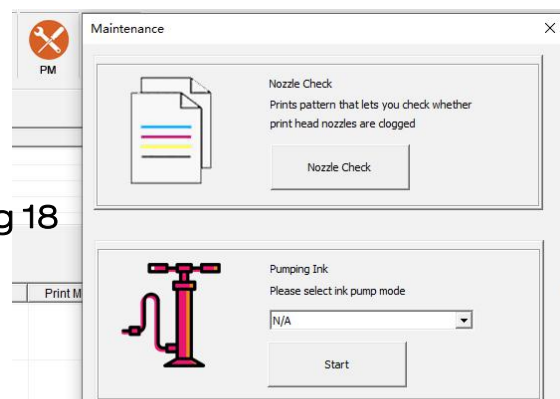
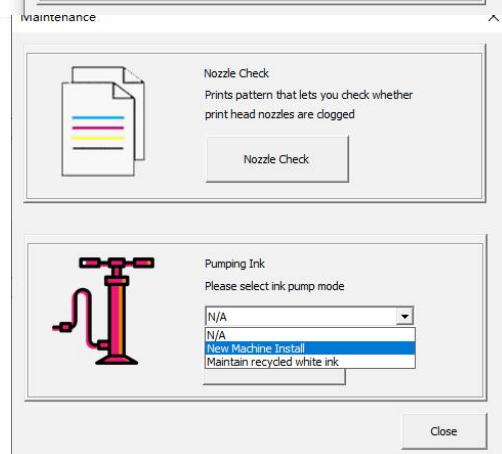
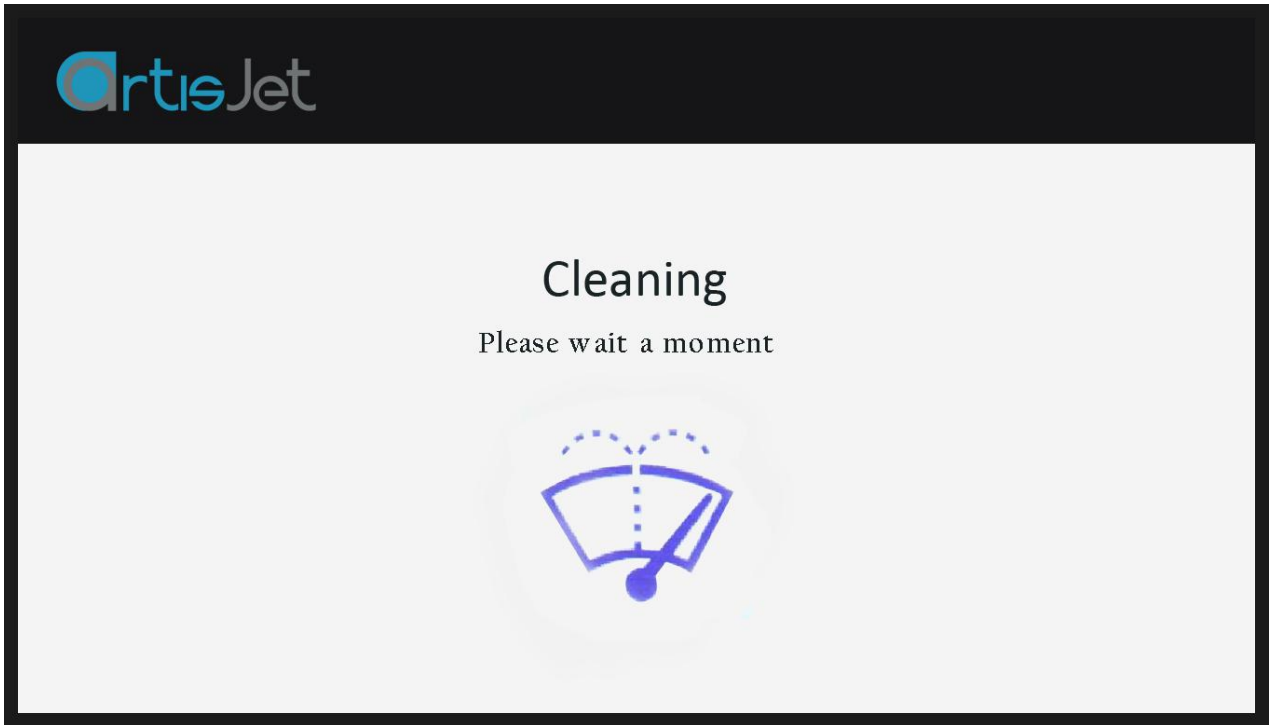


Fig 19



## Initialize the ink system

Fig.20 –the “Cleaning” message will be displayed on the printer screen



Please wait for about **5 minutes**. After Pumping Ink is over, you can see that the ink has been introduced into the waste ink bottle. ( Fig 21)

Fig 21



Click“ **Clean** ” button on control panel, It will show “ cleaning”, Please wait for about **1 minutes**., cleaning is over, the control panel will show “ Printer ready”.

( Fig 22)

Fig 22



## 7. Printing quality test

### Proceed the nozzle check

**Note:** this operation is important to ensure the printing quality for further production.




Fig.23 – Connect the USB cable



Fig.24 – Take one piece of E-fixture matt and peel off the film one side only



Fig.25 – Put the E-fixture matt onto the table and spread it till even on the surface

After the E-fixture is all fixed on the printer's table (printing area), press the  button from the control panel.

The working table will move forward first, then will move up to the highest position (**Automatic height adjustment**) and finally back to the original position.

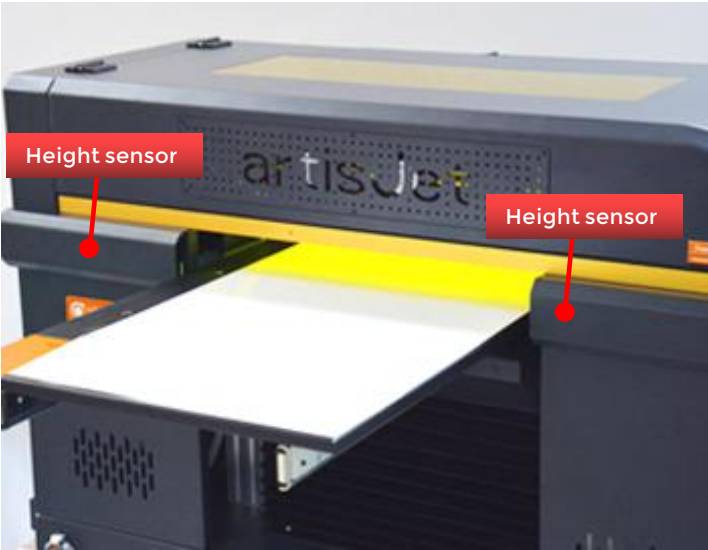


Fig.26 – Automatic height adjustment with height sensor

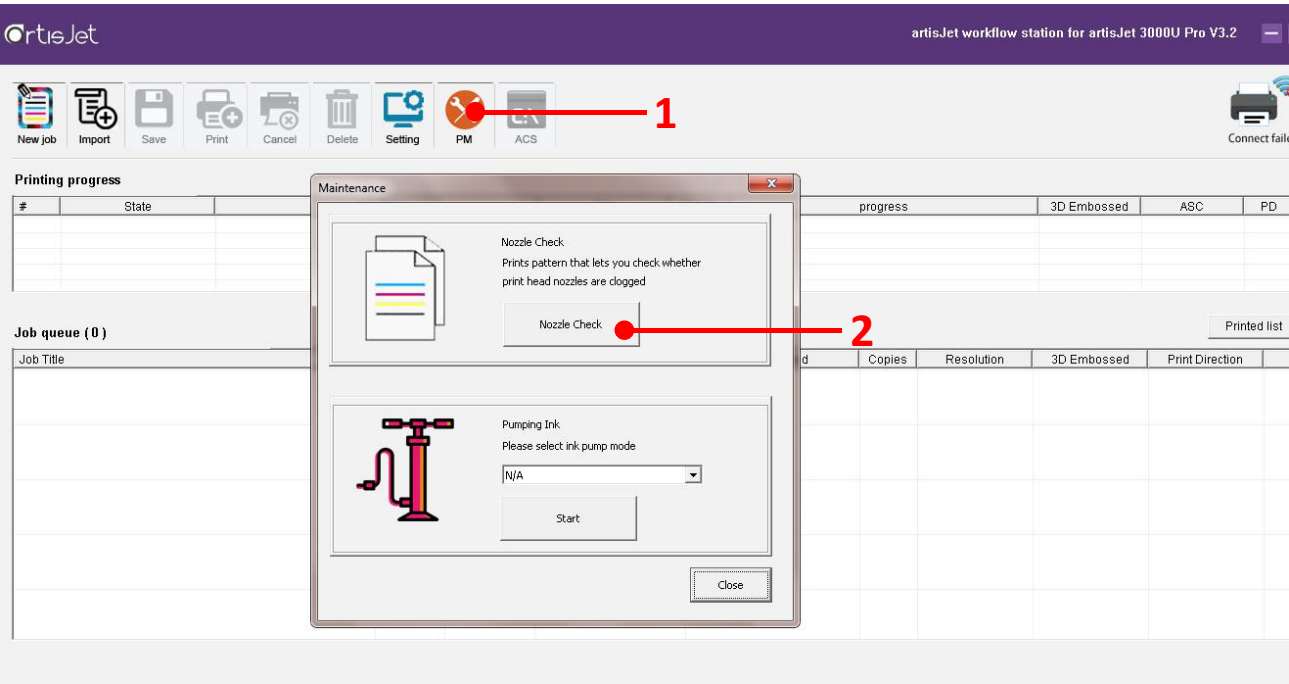


Fig.27 – On the Print Software, click on the “PM” icon (1); the “Maintenance” window will open; click on the “Nozzle Check” button (2); wait till the screen states “Print Complete”



## Check the print quality

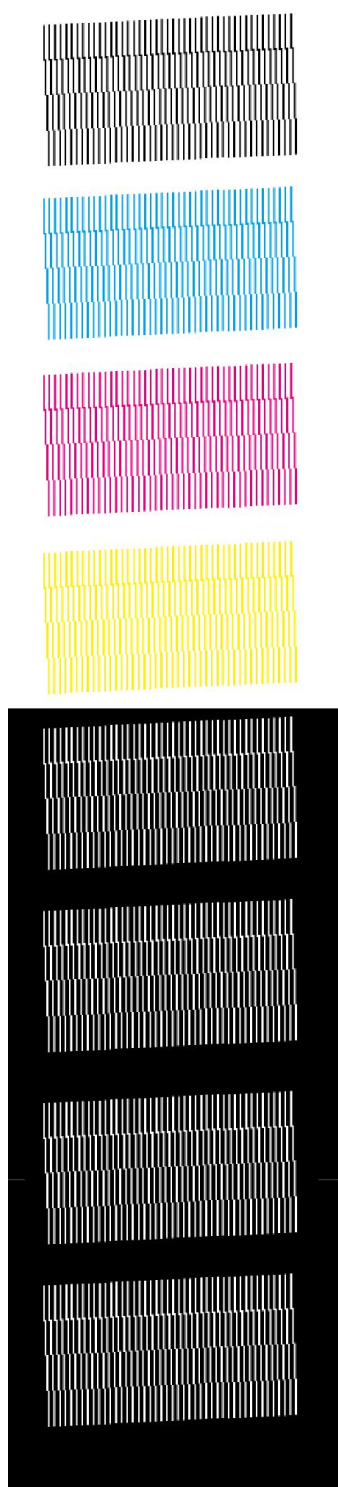


Fig.29 – Good quality. Continue.

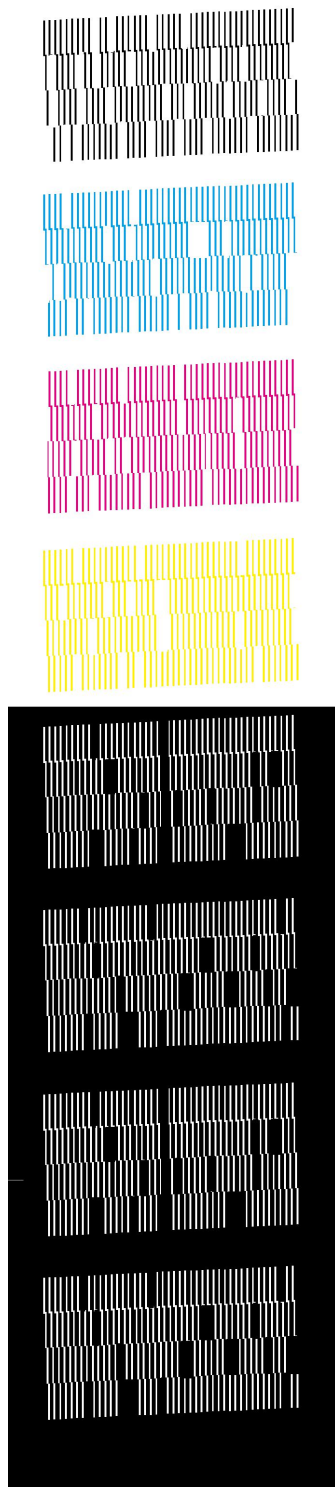


Fig.30 – Bad quality. Repeat the SPI + CLEAN process


Fig.28 If the print quality is not good(Not all the lines are full), click “CLEAN” button on the control panel till the nozzle check is full in all colors.

## 8. start printing

### Starting print printing

The first step is to print “XY Starting Point -artis 3000U pro(Unit-CM) ” (Fig 31 ) onto the table.

Fig 31

From the Print Software, click on the  icon to open the “XY Starting Point -artis 3000U pro .prn ” file and print it ((Fig 32 ) .

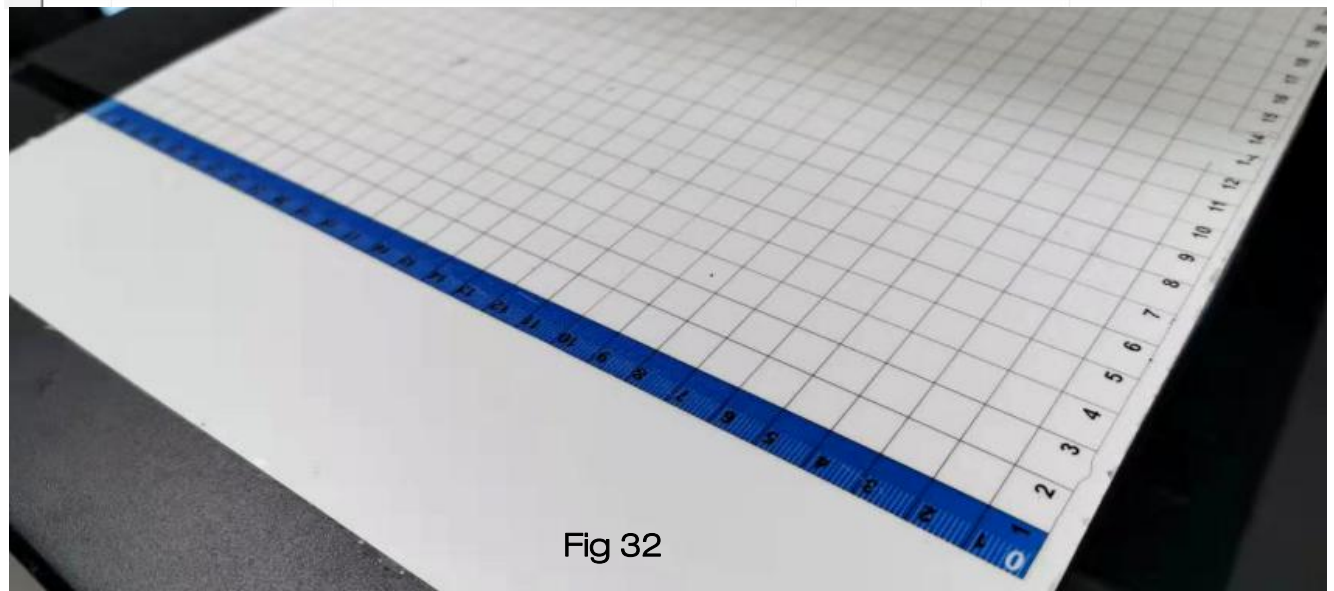
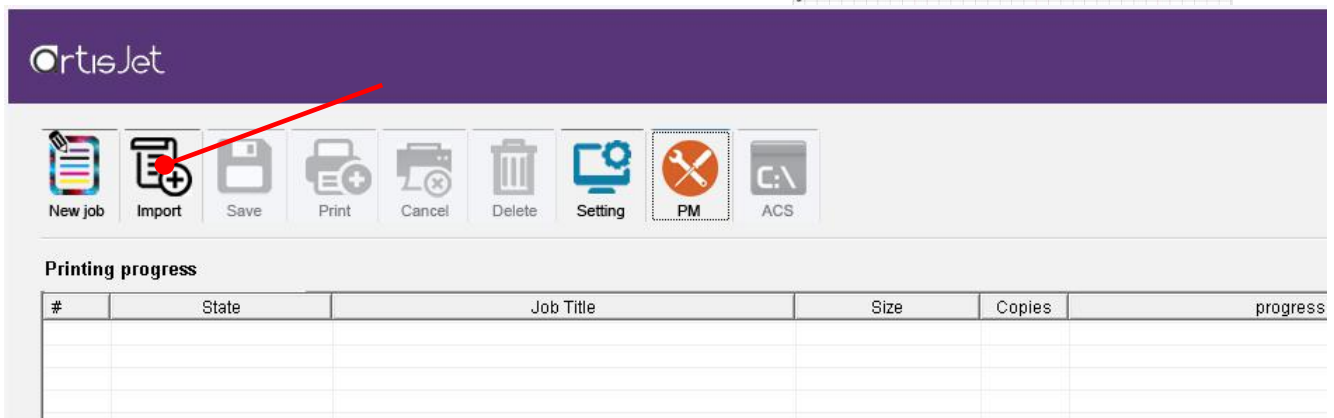
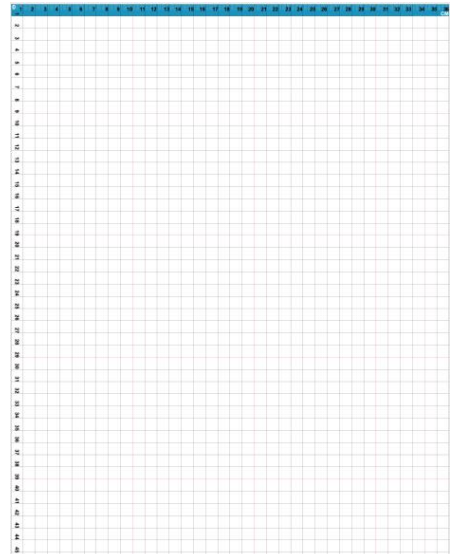


Fig 32

## 8. start printing

### Correctly load & print the templates

The first step is to print “Color Test Image” onto the table (Fig. 33).


From the Print Software, click on the  icon (Fig.34) to open the “Color Test Image” file(Fig.35) and print it (Fig.36).



Fig.33 - Color test image

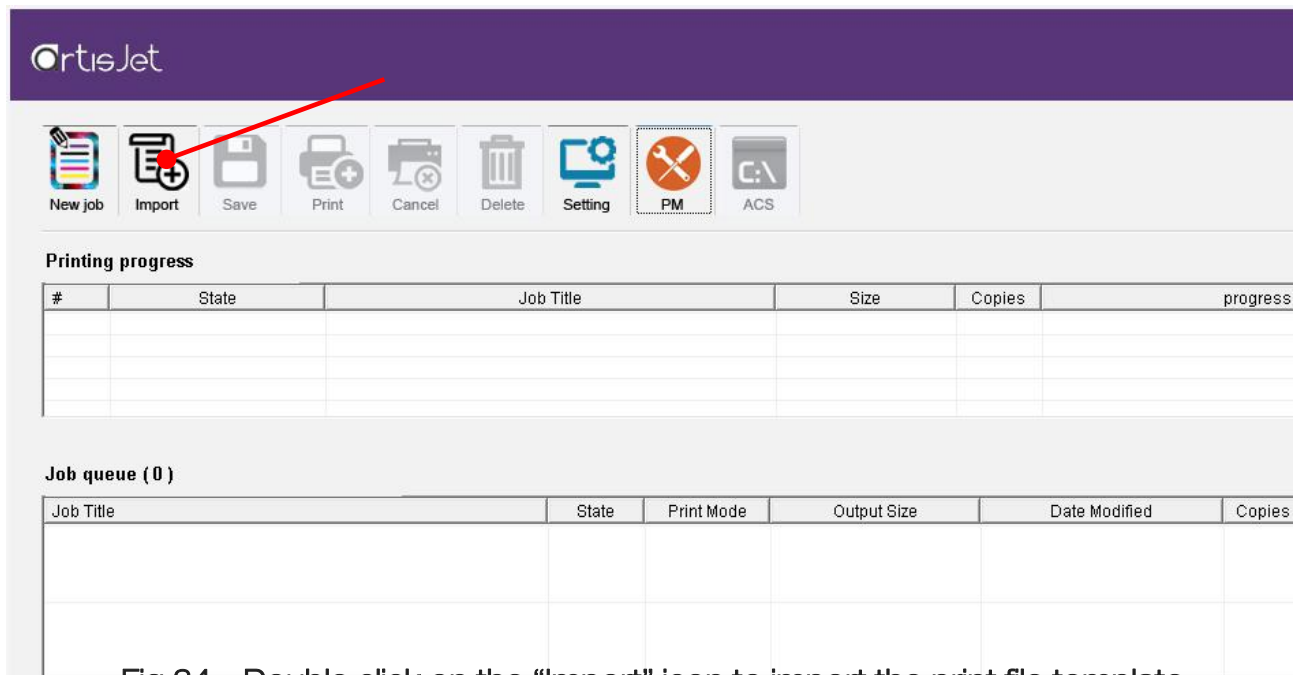


Fig.34 – Double click on the “Import” icon to import the print file template

Following the previous command, an “*Import File*” window will open. Locate the “*Color test image.prn*” file from the USB drive, and click the “*Open*” button.

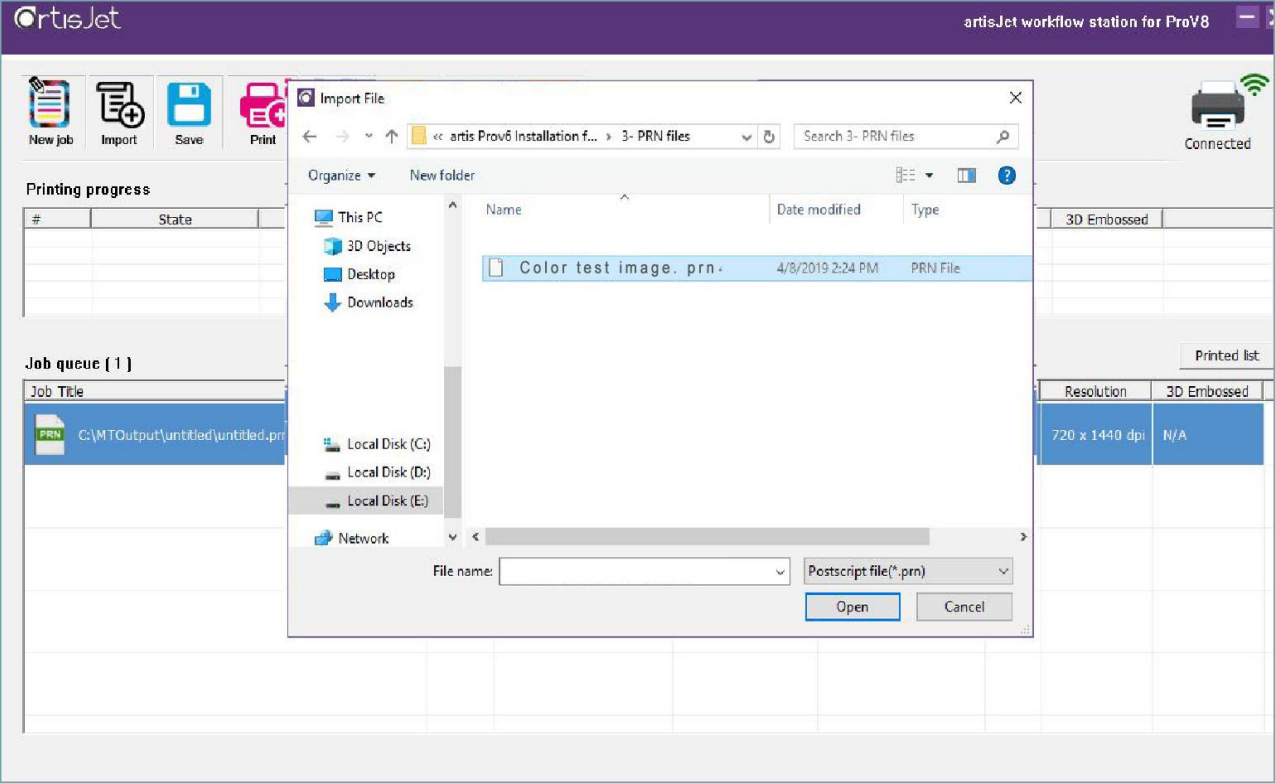


Fig.35 – Open the “Color test image.prn” print template file

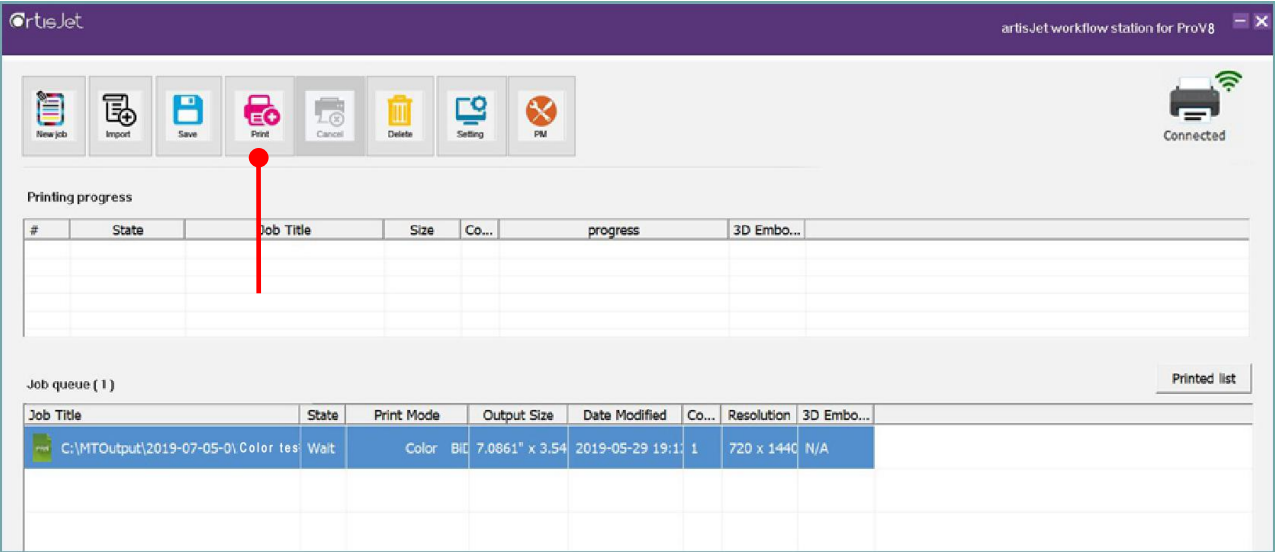


Fig.36 – Go to the Print Software and click on the “Print” icon



## Print result

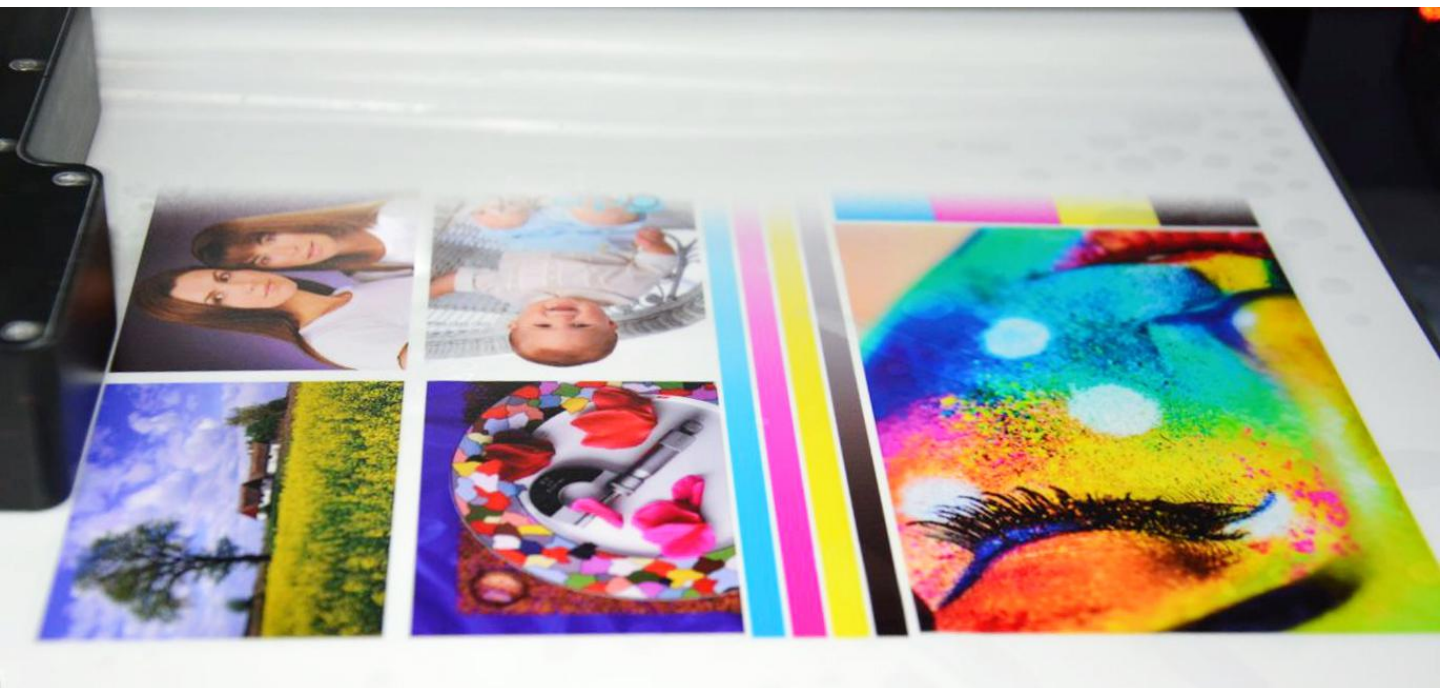


Fig.37 – “Color test image”printing

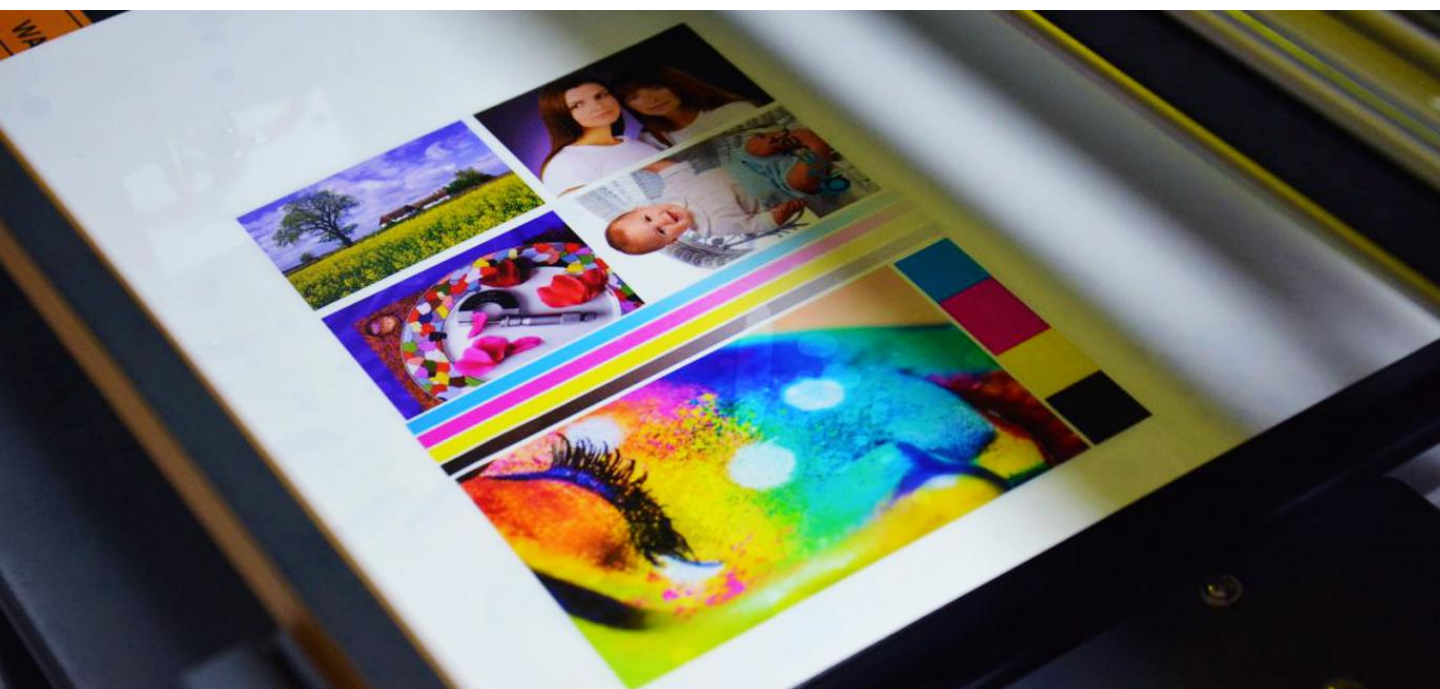


Fig.38 – Print result



## Automatic height adjustment

For each product, there might be different printing height.

**artis 3000U Pro** provides automatic height adjustment for different products.

Click the “**Auto Position**” button on the control panel, then the working table will return to its back position and will adjust the height.

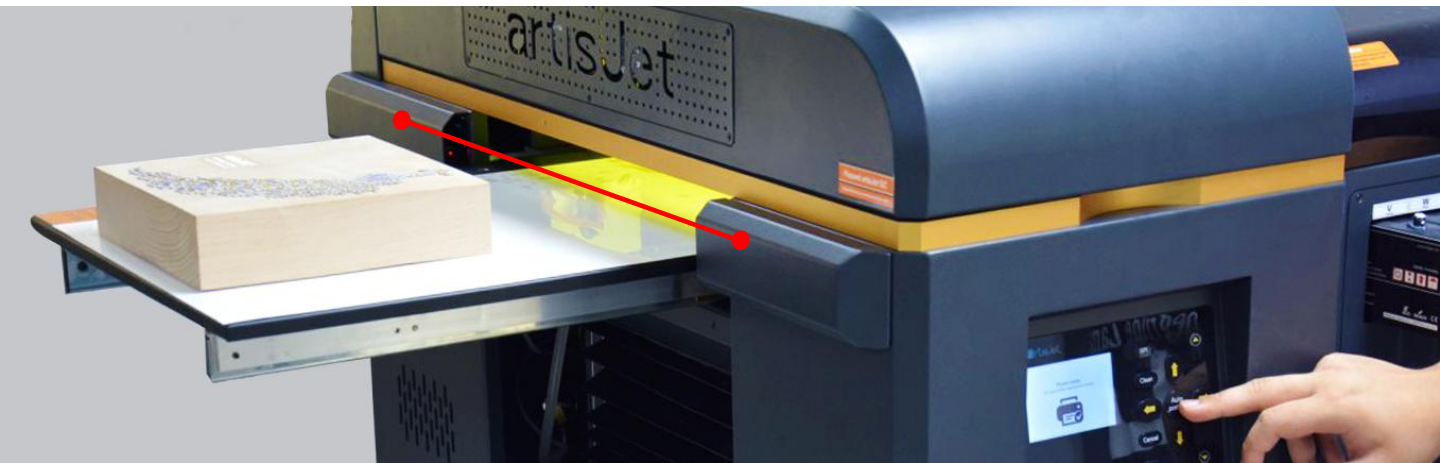


Fig.39 – Place product on the working table; it must be in front of the height sensors



Fig.40 – Auto-detecting the sample and auto-adjusting the printing height

## Start the product printing

For each product, there can be different printing menus. **artisJet** provides custom menus & templates for different products. Product printing menus are available on demand.





CONTACT US FOR MORE

[artisjet.com](http://artisjet.com) |

[ccc@artisjet.com](mailto:ccc@artisjet.com) |

+86 186 1133 3892